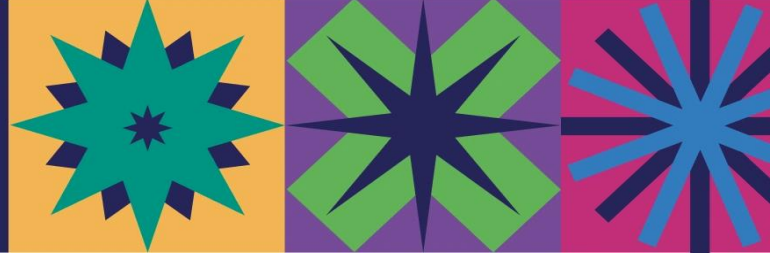


The Art of Transformative Dialogue

Trinity College Dublin &
University of Toronto

October 20–22



Laidlaw Scholars Conference Poster Showcases

Below are the scheduled times for students to be at their showcased research posters – you can also view these posters at any break time over the weekend.

University of Toronto

Saturday, October 21, 2023 | 12:30 – 1:30 PM

Student Name	Institution	Poster Title	Time Slot
Mridula Sathyanarayanan	Toronto	The Internal Dimension of Buddhist Meditation Practices: An experimental phenomenological study	1:10 - 1:30
Ananya Pal	Barnard College	Redefining and Internationalizing: Street Art in the City State of Singapore	1:10 - 1:30
Omar Sbaih	Georgetown University	The Effects of MDMA on <i>In Vitro</i> Hippocampal Network Dynamics	1:10 - 1:30
Pooja Shah	Tufts	Characterizing Post-Diagnosis Gaps Along the TB Care Cascade	1:10 - 1:30
Asher Baron	Columbia	Unequal Geographies of Gender-Affirming Care: A Comparative Typology of European Trans-Specific Healthcare Systems	1:10 - 1:30
Mia Adriko	Cornell	Live it, Learn it: Traditional and Non-Traditional Approaches to Learning /Product Commercialization and Self-Sustainability	1:10 - 1:30
Cooper Price	Toronto	Evaluating Olympic Sustainability through the Policy of Paris 2024	12:30 - 12:50
Aimar Rosario Avila	Barnard College	El Laberinto: The Impact of Colonialism in Puerto Rico's	12:30 - 12:50



Student Name	Institution	Poster Title	Time Slot
		Education System and Social Mobility	
Sophia Lu	Georgetown University	Roll the Cameras: The Influence of Chinese State Censorship on Global Film Production	12:30 - 12:50
Khushi Jain	Tufts	Nanobodies targeting acetylcholinesterase as a novel intervention to control schistosomiasis	12:30 - 12:50
Yasmin Bombata	Leeds	Microglia Activation in Ageing and Neurodegenerative Diseases	12:30 - 12:50
Joe Karaganis	Columbia	<i>Automating the Fourth Estate: Journalistic Norms and Ethics Under the LLM Revolution</i>	12:30 - 12:50
Feifei Hung	Cornell	Impact of US-China Relations on Global Semiconductor Supply Chain Disruption and Opportunities Posed to Brazil's Emerging Economy	12:30 - 12:50
Jay Philbrick	Brown	In Pursuit of Juvenile Justice: Evaluating the Juvenile Justice and Delinquency Prevention Act of 1974	12:30 - 12:50
Zahra Lotfifard	HKU	The Protective Role of Endothelial SIRT1 Against Vascular Aging and Hypertension	12.30-12.50
Zoe Reichert	Toronto	Digital Transnational Repression	12:50 -1:10
Avery Lambert	Barnard College	Theories of Kingship in the Song of Lewes	12:50 -1:10
Andy Feng	Georgetown University	Partisanship vs. Precedent in U.S. Labor Law: Analyzing the National Labor Relations Board (NLRB)'s Recent Dissention over the "Entrepreneurial Opportunity" Standard in Employee vs. Independent Contractor Classification Cases	12:50 -1:10
Sophia Chung	Tufts	in the Workplace	12:50 -1:10
Arthur Martin	Leeds	Measuring Multidimensional Poverty in the Nepalese Himalaya	12:50 -1:10
Cady Chen	Columbia	Sensory Stimulation Induces Pathological Changes in the Brain Tumor Microenvironment	12:50 -1:10
Anna Rose Marian	Cornell	Great Expectations: Can Seaweed Aquaculture Be Scaled Up For Climate Mitigation?	12:50 -1:10
Victor Xia	Brown	Assessing Needs and Challenges for Reentering Individuals in the Criminal Legal System After COVID-19: A Quantitative Analysis	12:50 -1:10



Saturday, October 21, 2023 | 12:20 – 1:20 PM

Student Name	Institution	Poster Title	Time Slot
Caitlin McIntosh	Cambridge	A retrospective clinical chart review approach to evaluate anticancer therapy	12:20-12:40
Nadia Kwiecinska	UCL	Isobenefit Cities: Urban Growth Lab	12:20-12:40
Hassan Javed	Columbia	Europe's Forgotten: An Analysis of the European Union's Refugee Asylum and Housing Policies	12:20 - 12:40
Nicolas Robson	EPFL	Building a 'smart' monitoring system for bee colony observation	12:20 - 12:40
Callum Murison	St Andrews	Mapping a star-forming region in 3D with Gaia astrometric data	12:20 - 12:40
Advik Bahadur	TCD	Investigation of the effectiveness of introducing a few adaptive controllable nodes in complex systems to increase autonomy and synchronisation	12:20 - 12:40
Grace Kaste	Columbia	Shaping New York Cap and Invest: Linkage in the Wake of Overallocation	12:40-1:00
Emma Hwang	Toronto	Beyond the Factory and The City	12:40-1:00
Andrea Tortella	UCL	Homelessness: At What Cost?	12:40-1.00
Anna Metzger	Cambridge	Protecting the "Invisible": Violence Against Sexual and Gender Minorities in Humanitarian Contexts	12:40 - 1:00
Julia Goralsky	Columbia	Analyzing the Sustainability of a Hypertension Clinic in Bugoye, Uganda	12:40 - 1:00
Alixé Kirbihler	EPFL	Comm2 regulation of synaptic arborization at the neuromuscular junction and its impact on the locomotor system of <i>Drosophila Melanogaster</i>	12:40 - 1:00
Camille Ryder	St Andrews	Analysing the Social and Musical Impacts of Year Three StAMP Discovering Brass	12:40 - 1:00
Méabh Scahill	TCD	We are here! Queer space, visibility, and the built environment: a study of the Hirschfeld centre and the gay scene in 1980s Dublin	12:40 - 1:00
Alison Carless	Cambridge	Nation building and identity in Kazakhstan conflicts and challenges	1:00 - 1:20
Nicolas Blondon	EPFL	How to design a light engine for a 3D printer?	1:00 - 1:20
Elena Rico Hernando	St Andrews	The Effect of alpha-Synuclein Aggregates on Astrocyte Calcium Signalling in Neurodegeneration	1:00 - 1:20
Alannah Maxwell	TCD	Sporting Bonds: Can sporting programmes properly facilitate the meaningful integration of migrant and host communities in Ireland?	1:00 - 1:20
Gemma Freeman	UCL	Exploring the Landscape of Mutations in the Gene PTPN11	1:00 - 1:20

