

Bridge for Humanity Reimagines Smart Building

To ensure...

- Symbolic Architectural Features**
 - Reduced material usage in construction of museum
 - Actively feature green initiatives in the architectural design of the museum, including a vertical farming garden, water filtration system and solar panels
 - Embodiment of sustainability and gamification support for sustainability solutions
- Data Collection and Analytics**
 - Identification, combination, and management of multiple data sources, all while choosing the right data to use
 - Building of advanced-analytics models for descriptive, predictive, and prescriptive analytics, and embedding them into our partner organisations
 - Using insights from the data and applying them to transform and improve operations to address climate change
- Sustainable Technology Distribution**
 - Feature product placements of up-and-coming small-scale sustainability solutions by placing products within the museum
 - Act as a distribution channel to encourage adoption of cutting-edge technological products among the general public

Star Panels Category
 primary 10 percent of Academy's standard energy needs

Automated Ventilation System
 which take advantage of the natural air currents, hence allowing **Passive Ventilation** and regulation of air within the building

Green Roof
 Allowing for water runoff, improving thermal performance of the building and supporting wildlife habitats

Timber
 used to achieve carbon neutrality as timber is significantly lower in embodied carbon and also sequesters carbon

Biophilic Design
 which creates a connection and a sense of place to the visitors

Natural Lighting
 have access to design

Sustainable Food production

Soil Nutrition Management- Variable Rate Fertilization Map

- Many factors go into soil management; there are many different types of fertilizers, and not all fertilizers work the same for all soil types/conditions
- A network of sensors + physical soil samples work together to produce a virtual "map" of different soilfields
- Applied fertilizer type, dose and application time is determined

CIBO Technologies Efficient Farming

- Roots with AI image sensing interpret images of crops to help determine when they are ready to be harvested
- Harvesting itself could also be done with autonomous robots

Semioles Pest Control

- Climate sensors and automated pheromone dispensers work together to help limit pests
- Pheromones are a sustainable alternative to pesticides since they're a natural sex hormone produced by bugs; not a lab-made chemical. Images of pest traps are captured for further analysis
- Full system used to train AI predictive models to forecast anticipated levels of pests, and responds with appropriate pheromone dispensals

Sustainable Land Use

Soil Condition Analysis System SCANS Sensor

- Starts with the capture of prior information to characterize the soil
- Soil sampling design and finally the estimation and mapping of soil organic carbon.
- Currently, the SCANS uses a mobile multisensor platform, with electromagnetic induction, gamma radiometric and accurate positioning sensors, to gather information on soil variability.

Drones

- A drone georeferenced GIS-GPS integrated scanning system of soil and real-time telecommunication with a ground base for automatic data processing.
- Agronomic mapping is based on captured data, determining the variability of plots. The data are interpreted in terms of agronomic using a mathematical model developed, resulting "Agronomic map" which recommends, based on the results obtained, the calculation of nitrogen needs and irrigation for each plot.

High Spatial Resolution Imagery

- Automatically map harvest boundaries with very high resolution multispectral SkySat imagery
- Coordinate high resolution imagery needs through one provider
- High-frequency PlanetScope imagery

Sustainable Water Supply

Water Glider

- Real-Time Communications Gateway; Provides immediate situational awareness and accelerated decision making
- Provides immediate situational awareness and accelerated decision making
- New sensors and software can be added, and new systems integrated

Seawater Desalination

- Seawater desalination is the removal of salt and impurities from seawater to produce fresh water.
- The desalination plants use a reverse osmosis process. Seawater is pumped into the desalination plant from the ocean and passes through pre-treatment filtration to remove majority most of the large and small particles.

Museums as a... Virtual Network

For...

- Virtual Museum**
 - Digital museum engagement has skyrocketed since the pandemic
 - Many museums have taken advantage of the demand to publish virtual tours on platforms like GAC
 - The 360 technology is an in-between of static images and VR and can be experienced on both a desktop and smartphone
 - This immersive form of "virtual museum" mimics the "museum experience" best however users must have equipment like the Oculus Rift
- Mobile App**
 - Mobile app is an essential tool to retain visitor footfall in museums
 - Text-heavy content can distract visitors and lower interaction between visitors and exhibits
 - Mobile-learning is effective in an informal setting like museums
 - Mobile apps can bridge generation gaps between museum exhibits and the younger generation
 - Marketing must be done properly to increase mobile app awareness among visitors
 - Audio recordings, videos and pictures must be made available within the mobile app

Research
 Dedicating sections of BfH to advanced partner museum's research and innovation

Content
 Collaborations with partner museums to curate content

Technology
 Using technology such as 3D printers and AR to showcase partner museum exhibits

Action
 Users can help for and participate in community engagement projects related to climate change

Global Collaboration

3D Scanning and Printing

- Museums can "digitize" and repatriate artefacts "obtained" from their country of origin
- Tactile learning opens museums to communities who cannot participate in traditional video-audio experiences
- There is a growing interest in digital learning and exploration of museum collections

Inter-Museum Partnership

- Provide a bridge for museums all around the world to showcase innovative research and solutions pertaining to sustainability and climate change
- Empower previously marginalised communities to share their lived experiences of climate change and place-based knowledge of innovative climate/environmental management practices

Inter-Museum Content Curation

- Pioneer an online platform where museums worldwide could share digital information of museum content by uploading 3D scans
- Museum curators could purchase digital information to create digital and physical replicas using 3D printing

Patent Pool Model for Knowledge Sharing

- Patent pools can be defined as an agreement between two or more patent owners to license one or to their parties. Often, patent pools are associated with complex technologies that require complementary patents in order to provide efficient technical solutions.
- A set of criteria of entry can be set up to manage the sharing of data when joining the network
- The criteria can be both qualitative and quantitative in nature
- This can relieve the suspicion of different participating museums and provide an incentive for museums to share their respective research and technological know-how
- An emphasis on collaboration in the face of common problem of climate change instead of competition can be realised through this initiative

Immersive Experience

Pre- and Post- Visit Engagement

- Pre-visit: online platform can provide visitors with context and useful information before the visit; a "pre-visit experience" is "critical" to in-depth engagement
- Post-visit: extending visitor engagement through:
 - allowing audience to focus on objects at the museum and information at home
 - curated content tailored to age of visitor
 - "unlocking special content" after visit
 - allowing visitors to review and revisit the collections

Beacon Technology

- There are many creative uses of beacons – it can be more than just a content delivery system
- Beacons have the potential to act as guiding systems to the disabled community
- Beacons can be used to gauge visitor interest towards different exhibitions based on how long they spend at the exhibit
- Beacons are a relatively low-cost solution for proximity-based content delivery

AR Technology

- There is a demand for smart learning environments and a "phygital" (physical-digital) learning experience
- There is a need for more participative learning experiences in order to capture visitor attention
- Museums should explore AR and gamified learning experiences

Crowd Sourced Initiatives

Collaborative Curation

- Launch a website for artists and the general public to submit projects in different media forms (such as visual art, opinion articles and videos) for public content distribution
- Open calls could be created by museum curators

Collaboration and Participatory Storytelling

- Online platform means users can play an active role in building their own personally-curated collections, highlighting engagement.
- Users/visitors/audience become "participants", sharing and co-creating knowledge and ideas.

Social Media as a platform

- Social media acts as an extension of the museum; a place to continue the conversation about climate change and part of the online platform. Kelly (2016) identified from qualitative interviews that users would prefer Facebook or Instagram to platform like a museum website.

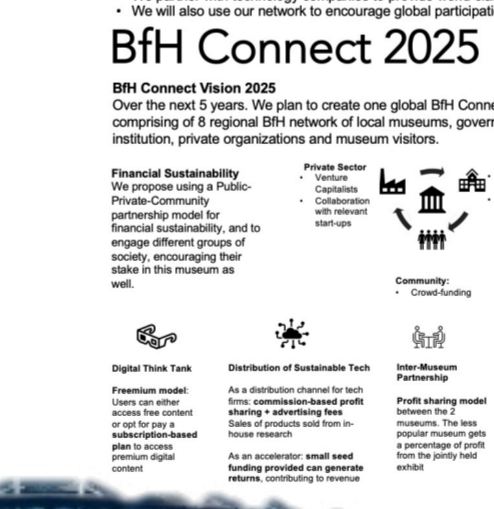
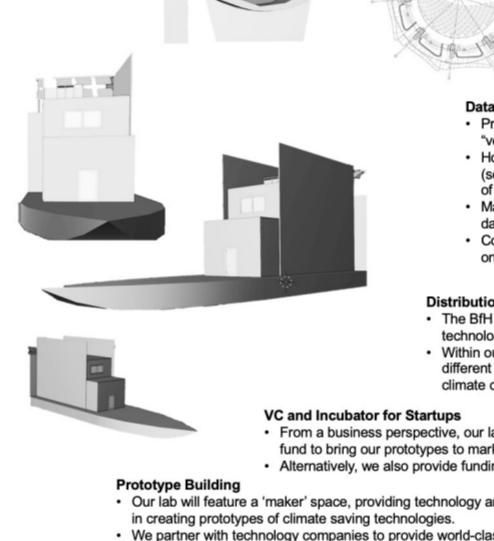
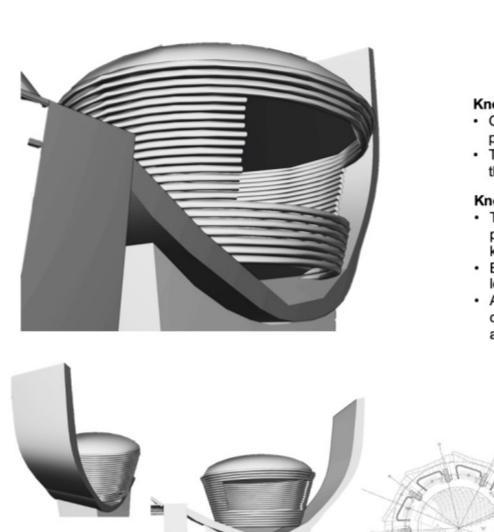
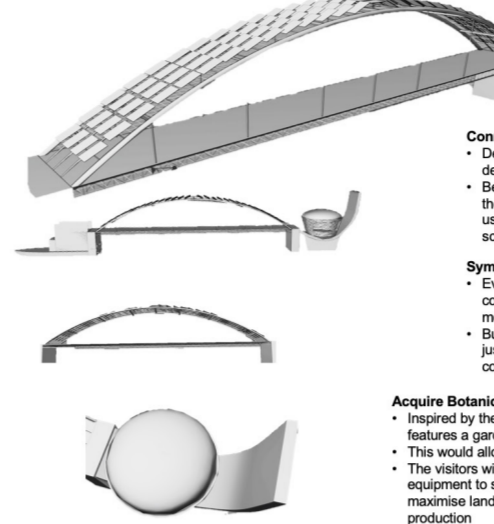
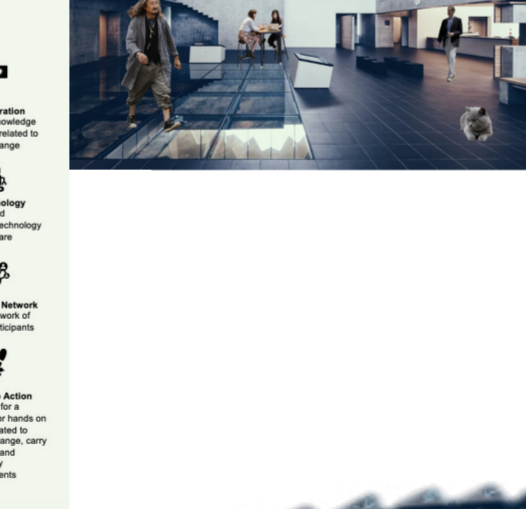
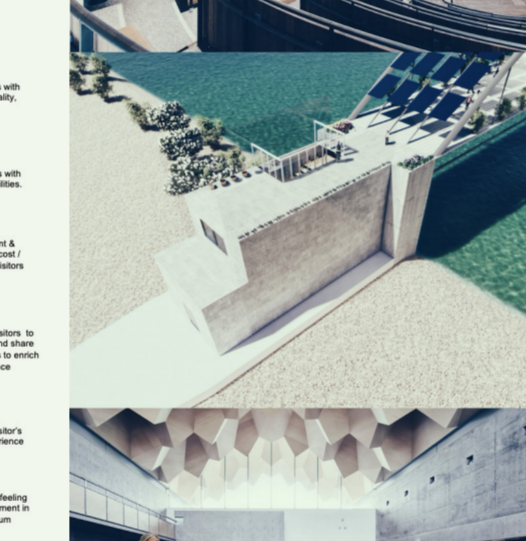
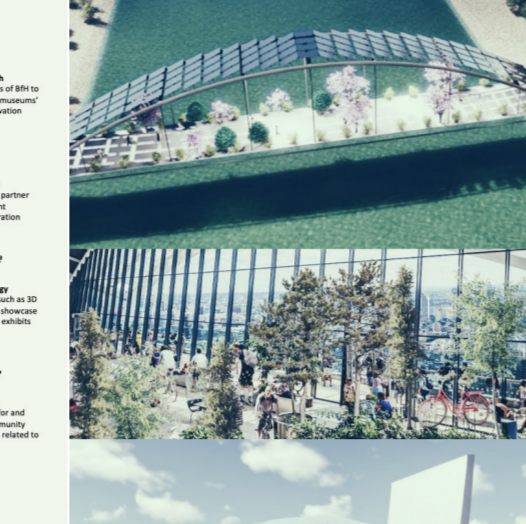
Inspiration
 Acquire knowledge on issues related to climate change

Technology
 Acquire and purchase technology and hardware required

Virtual Network
 Join a network of active participants

Call to Action
 Volunteer for research or hands on plan to address climate change, carry out projects or become community improvements

BfH is a... Bridge For Humanity



BfH is a... Bridge For Humanity

Connecting Communities

- Designed as portable Bailey bridge, our bridge is rapidly designed at a low cost to connect communities
- Being a pedestrian and bike-only bridge, our bridge shortens the distance of commuters to work, thereby encouraging to use eco-friendly modes of transportation such as bike, scooters or rollerblades

Symbolic Architectural Features

- Every bridge features smart technologies such as AI-controlled solar panels; they can serve as exemplified models of a smart building
- Build over major river systems, our bridge is envisioned not just as a physical bridge, they embody a determination to combat climate change collectively

Acquire Botanical Knowledge

- Inspired by the concept of Victory Garden during World War 2, the bridge features a garden planting edible fruits
- This would allow visitors to acquire crucial knowledge about agriculture.
- The visitors will have an option to purchase seeds and the necessary equipment to set up a vertical farming garden at home. This can maximise land use and build a strong foundation for sustainable food production

Heat Dissipation
 The structures have incorporated smart technologies to withstand rising temperatures such as AI controlled solar panels and stores to dissipate heat quickly

Green Label
 The structures are built with sustainable and green materials to achieve low to negative carbon emission

Climate Proof
 The structures are designed to withstand harsh climate conditions such as flooding

Modular
 The structures are modular and can be prefabricated to be deployed in far flung regions where the impact of climate change is especially severe

Think Tank

Knowledge Generation

- Our think tank unites prominent stakeholders from both the private and public sphere
- This allows us to carry out climate change specific research that is global and interdisciplinary

Knowledge Distribution

- The BfH will adopt a similar "patent sharing" model of the pharmaceutical industry to accelerate the distribution of knowledge
- Built as an open space, BfH will organize regular public lectures by prominent leaders from every field
- After the lectures, the audience are invited to participate in our crowdsourced research and engineering projects, which are featured on our online platform

Data Collection and Analysis

- Proposed BfH establishes a partnership with Kaggle to host "verified" datasets from certified researchers from museums
- Hosted on a separate page to the public Kaggle datasets (separated from the home page where anyone, regardless of qualifications, can post data)
- Market a campaign to let the public know there are now datasets from real researchers available
- Could expand to not just museums, but also university labs, on-field data collection (e.g. oceans)

Distribution Network for Climate Saving Technologies

- The BfH is also a distribution network for climate saving technologies
- Within our global museum network, we will evaluate the needs of different technology and supply the required technology to combat climate change

VC and Incubator for Startups

- From a business perspective, our lab will feature an internal incubator and a Venture Capital fund to bring our prototypes to market.
- Alternatively, we also provide funding to startups specializing in climate change technologies

Lab For Green Futures

Prototype Building

- Our lab will feature a "maker" space, providing technology and resources for individuals and organizations interested in creating prototypes of climate saving technologies.
- We partner with technology companies to provide world-class support for our makers.
- We will also use our network to encourage global participation and collaboration.

Financial Sustainability
 We propose using a Public-Private-Community partnership model for financial sustainability, and to engage different groups of society, encouraging their stake in this museum as well.

Public Sector
 Grants from the government

Private Sector
 Grants from Foundations

Community
 Crowdfunding

Digital Think Tank
 Premium model: Users can either access free content or opt for any a subscription-based plan to access premium digital content

Distribution of Sustainable Tech
 As a distribution channel for both from communities-based profit sharing + advertising fees. Dates of launches will form in-house research

Inter-Museum Partnership
 Profile sharing model between the 2 museums. The less popular museum gets a percentage of profit from the jointly field exhibit

Museum Visits
 Ticket sales: Museum visitors can also purchase full exhibits located in the museum

Maintain Freshwater Resources and Protect Oceans
 130,500kg of debris removed from the oceans by funding 1 WasteShark drone

BfH @ Glasgow Science Center COP 26

BfH as a concept is designed to be showcased and present through a wide variety of medium. On the one hand, it can be presented as a green building model, on the other hand, it can be condensed into a QR code sticker pasted at the entrance of a café. For this reason, our idea is extremely flexible and can scale and be tailored to different exhibition context.

For the Glasgow exhibition, we have prepared two proposals, each combining both physical and virtual components. We also have planned for a fully virtual scenario (COVID Adjustment). We are ready to proceed with a range of options based on the space and resources available.

Physical Component

- Poster presentation**
 - As part of our presentation, we will be showcasing our concept through a live presentation, featuring our posters and our more in-depth ppt deck
 - Our posters will be designed to be interactive, with beacon technology and QR codes
- Model Presentation**
 - We will also be featuring a 3D printed model of our concept, which is planned to be placed over River Clyde, alongside the Glasgow Science Centre
 - We will also be creating a global terrain map and present the climate risked faced by every region. It will also showcase our BfH Vision 2025 and our planned bridge construction around the world
 - It will also feature an interactive AR component demonstrating the impact of natural disasters on communities
- Prototype Show Case**
 - We will also be showcasing prototypes of various climate saving technologies, such as portable solar panels, water filter system, drones and components used for vertical planning

Virtual Component

- AR interaction with Models**
 - Our physical model will be integrated with an AR component, where users can scan the model using their mobile phones to load interactive contents related to climate change
- Multitouch desktop**
 - As part of our exhibition, we will also be featuring a multitouch desktop for users to engage with our materials
- Virtual Network QR Code**
 - Visitors to our exhibition can join a BfH Connect virtual network on platform such as MicroChat
 - Visitors will also be able to access to physical initiatives organized in their communities such as beach cleanup!
 - Visitors will have the option to receive regular update post exhibition, as BfH continue to scale

BfH Connect Glasgow

The BfH Glasgow network will comprise of most of the heritage institution in Glasgow. It will serve as part of the BfH UK network to facilitate the research and adoption of green technologies.

The Bridge is currently planned to be built over River Clyde, beside the Glasgow Science Centre.

COVID Adjustment

As part of our COVID Adjustment plan, we have designed a fully online option of our exhibition. We will be utilizing webhosting platforms such as WebEx and our virtual network to present our concept.

Scan to Access our Website:
www.thebridgeforhumanity.com

Museums and Galleries included:
 Hunterian Zoology Museum, Hunterian Art Gallery, Kelvingrove Art Gallery and Museum, The Tenement House, Royal Highland Fusiliers Regimental Museum, St Mungo museum Of Religious Life and Art, Gallery of Modern Art, People's Palace, The Burrell Collection, Riverside Museum, The Tall Ship at Riverside, Kevin Hall Open Collections, Kelvingrove Art Gallery and Museum, The Tenement House, Royal Highland Fusiliers Regimental Museum, St Mungo museum Of Religious Life and Art, Gallery of Modern Art, People's Palace, The Burrell Collection, Riverside Museum, The Tall Ship at Riverside, Kevin Hall Open Collections, Kelvingrove Art Gallery and Museum, The Tenement House, Royal Highland Fusiliers Regimental Museum, St Mungo museum Of Religious Life and Art, Gallery of Modern Art, People's Palace, The Burrell Collection, Riverside Museum, The Tall Ship at Riverside, Kevin Hall Open Collections, Kelvingrove Art Gallery and Museum, The Tenement House, Royal Highland Fusiliers Regimental Museum, St Mungo museum Of Religious Life and Art, Gallery of Modern Art, People's Palace, The Burrell Collection, Riverside Museum, The Tall Ship at Riverside, Kevin Hall Open Collections, Kelvingrove Art Gallery and Museum, The Tenement House, Royal Highland Fusiliers Regimental Museum, St Mungo museum Of Religious Life and Art, Gallery of Modern Art, People's Palace, The Burrell Collection, Riverside Museum, The Tall Ship at Riverside, Kevin Hall Open Collections, Kelvingrove Art Gallery and Museum, The Tenement House, Royal Highland Fusiliers Regimental Museum, St Mungo museum Of Religious Life and Art, Gallery of Modern Art, People's Palace, The Burrell Collection, Riverside Museum, The Tall Ship at Riverside, Kevin Hall Open Collections, Kelvingrove Art Gallery and Museum, The Tenement House, Royal Highland Fusiliers Regimental Museum, St Mungo museum Of Religious Life and Art, Gallery of Modern Art, People's Palace, The Burrell Collection, Riverside Museum, The Tall Ship at Riverside, Kevin Hall Open Collections, Kelvingrove Art Gallery and Museum, The Tenement House, Royal Highland Fusiliers Regimental Museum, St Mungo museum Of Religious Life and Art, Gallery of Modern Art, People's Palace, The Burrell Collection, Riverside Museum, The Tall Ship at Riverside, Kevin Hall Open Collections, Kelvingrove Art Gallery and Museum, The Tenement House, Royal Highland Fusiliers Regimental Museum, St Mungo museum Of Religious Life and Art, Gallery of Modern Art, People's Palace, The Burrell Collection, Riverside Museum, The Tall Ship at Riverside, Kevin Hall Open Collections, Kelvingrove Art Gallery and Museum, The Tenement House, Royal Highland Fusiliers Regimental Museum, St Mungo museum Of Religious Life and Art, Gallery of Modern Art, People's Palace, The Burrell Collection, Riverside Museum, The Tall Ship at Riverside, Kevin Hall Open Collections, Kelvingrove Art Gallery and Museum, The Tenement House, Royal Highland Fusiliers Regimental Museum, St Mungo museum Of Religious Life and Art, Gallery of Modern Art, People's Palace, The Burrell Collection, Riverside Museum, The Tall Ship at Riverside, Kevin Hall Open Collections, Kelvingrove Art Gallery and Museum, The Tenement House, Royal Highland Fusiliers Regimental Museum, St Mungo museum Of Religious Life and Art, Gallery of Modern Art, People's Palace, The Burrell Collection, Riverside Museum, The Tall Ship at Riverside, Kevin Hall Open Collections, Kelvingrove Art Gallery and Museum, The Tenement House, Royal Highland Fusiliers Regimental Museum, St Mungo museum Of Religious Life and Art, Gallery of Modern Art, People's Palace, The Burrell Collection, Riverside Museum, The Tall Ship at Riverside, Kevin Hall Open Collections, Kelvingrove Art Gallery and Museum, The Tenement House, Royal Highland Fusiliers Regimental Museum, St Mungo museum Of Religious Life and Art, Gallery of Modern Art, People's Palace, The Burrell Collection, Riverside Museum, The Tall Ship at Riverside, Kevin Hall Open Collections, Kelvingrove Art Gallery and Museum, The Tenement House, Royal Highland Fusiliers Regimental Museum, St Mungo museum Of Religious Life and Art, Gallery of Modern Art, People's Palace, The Burrell Collection, Riverside Museum, The Tall Ship at Riverside, Kevin Hall Open Collections, Kelvingrove Art Gallery and Museum, The Tenement House, Royal Highland Fusiliers Regimental Museum, St Mungo museum Of Religious Life and Art, Gallery of Modern Art, People's Palace, The Burrell Collection, Riverside Museum, The Tall Ship at Riverside, Kevin Hall Open Collections, Kelvingrove Art Gallery and Museum, The Tenement House, Royal Highland Fusiliers Regimental Museum, St Mungo museum Of Religious Life and Art, Gallery of Modern Art, People's Palace, The Burrell Collection, Riverside Museum, The Tall Ship at Riverside, Kevin Hall Open Collections, Kelvingrove Art Gallery and Museum, The Tenement House, Royal Highland Fusiliers Regimental Museum, St Mungo museum Of Religious Life and Art, Gallery of Modern Art, People's Palace, The Burrell Collection, Riverside Museum, The Tall Ship at Riverside, Kevin Hall Open Collections, Kelvingrove Art Gallery and Museum, The Tenement House, Royal Highland Fusiliers Regimental Museum, St Mungo museum Of Religious Life and Art, Gallery of Modern Art, People's Palace, The Burrell Collection, Riverside Museum, The Tall Ship at Riverside, Kevin Hall Open Collections, Kelvingrove Art Gallery and Museum, The Tenement House, Royal Highland Fusiliers Regimental Museum, St Mungo museum Of Religious Life and Art, Gallery of Modern Art, People's Palace, The Burrell Collection, Riverside Museum, The Tall Ship at Riverside, Kevin Hall Open Collections, Kelvingrove Art Gallery and Museum, The Tenement House, Royal Highland Fusiliers Regimental Museum, St Mungo museum Of Religious Life and Art, Gallery of Modern Art, People's Palace, The Burrell Collection, Riverside Museum, The Tall Ship at Riverside, Kevin Hall Open Collections, Kelvingrove Art Gallery and Museum, The Tenement House, Royal Highland Fusiliers Regimental Museum, St Mungo museum Of Religious Life and Art, Gallery of Modern Art, People's Palace, The Burrell Collection, Riverside Museum, The Tall Ship at Riverside, Kevin Hall Open Collections, Kelvingrove Art Gallery and Museum, The Tenement House, Royal Highland Fusiliers Regimental Museum, St Mungo museum Of Religious Life and Art, Gallery of Modern Art, People's Palace, The Burrell Collection, Riverside Museum, The Tall Ship at Riverside, Kevin Hall Open Collections, Kelvingrove Art Gallery and Museum, The Tenement House, Royal Highland Fusiliers Regimental Museum, St Mungo museum Of Religious Life and Art, Gallery of Modern Art, People's Palace, The Burrell Collection, Riverside Museum, The Tall Ship at Riverside, Kevin Hall Open Collections, Kelvingrove Art Gallery and Museum, The Tenement House, Royal Highland Fusiliers Regimental Museum, St Mungo museum Of Religious Life and Art, Gallery of Modern Art, People's Palace, The Burrell Collection, Riverside Museum, The Tall Ship at Riverside, Kevin Hall Open Collections, Kelvingrove Art Gallery and Museum, The Tenement House, Royal Highland Fusiliers Regimental Museum, St Mungo museum Of Religious Life and Art, Gallery of Modern Art, People's Palace, The Burrell Collection, Riverside Museum, The Tall Ship at Riverside, Kevin Hall Open Collections, Kelvingrove Art Gallery and Museum, The Tenement House, Royal Highland Fusiliers Regimental Museum, St Mungo museum Of Religious Life and Art, Gallery of Modern Art, People's Palace, The Burrell Collection, Riverside Museum, The Tall Ship at Riverside, Kevin Hall Open Collections, Kelvingrove Art Gallery and Museum, The Tenement House, Royal Highland Fusiliers Regimental Museum, St Mungo museum Of Religious Life and Art, Gallery of Modern Art, People's Palace, The Burrell Collection, Riverside Museum, The Tall Ship at Riverside, Kevin Hall Open Collections, Kelvingrove Art Gallery and Museum, The Tenement House, Royal Highland Fusiliers Regimental Museum, St Mungo museum Of Religious Life and Art, Gallery of Modern Art, People's Palace, The Burrell Collection, Riverside Museum, The Tall Ship at Riverside, Kevin Hall Open Collections, Kelvingrove Art Gallery and Museum, The Tenement House, Royal Highland Fusiliers Regimental Museum, St Mungo museum Of Religious Life and Art, Gallery of Modern Art, People's Palace, The Burrell Collection, Riverside Museum, The Tall Ship at Riverside, Kevin Hall Open Collections, Kelvingrove Art Gallery and Museum, The Tenement House, Royal Highland Fusiliers Regimental Museum, St Mungo museum Of Religious Life and Art, Gallery of Modern Art, People's Palace, The Burrell Collection, Riverside Museum, The Tall Ship at Riverside, Kevin Hall Open Collections, Kelvingrove Art Gallery and Museum, The Tenement House, Royal Highland Fusiliers Regimental Museum, St Mungo museum Of Religious Life and Art, Gallery of Modern Art, People's Palace, The Burrell Collection, Riverside Museum, The Tall Ship at Riverside, Kevin Hall Open Collections, Kelvingrove Art Gallery and Museum, The Tenement House, Royal Highland Fusiliers Regimental Museum, St Mungo museum Of Religious Life and Art, Gallery of Modern Art, People's Palace, The Burrell Collection, Riverside Museum, The Tall Ship at Riverside, Kevin Hall Open Collections, Kelvingrove Art Gallery and Museum, The Tenement House, Royal Highland Fusiliers Regimental Museum, St Mungo museum Of Religious Life and Art, Gallery of Modern Art, People's Palace, The Burrell Collection, Riverside Museum, The Tall Ship at Riverside, Kevin Hall Open Collections, Kelvingrove Art Gallery and Museum, The Tenement House, Royal Highland Fusiliers Regimental Museum, St Mungo museum Of Religious Life and Art, Gallery of Modern Art, People's Palace, The Burrell Collection, Riverside Museum, The Tall Ship at Riverside, Kevin Hall Open Collections, Kelvingrove Art Gallery and Museum, The Tenement House, Royal Highland Fusiliers Regimental Museum, St Mungo museum Of Religious Life and Art, Gallery of Modern Art, People's Palace, The Burrell Collection, Riverside Museum, The Tall Ship at Riverside, Kevin Hall Open Collections, Kelvingrove Art Gallery and Museum, The Tenement House, Royal Highland Fusiliers Regimental Museum, St Mungo museum Of Religious Life and Art, Gallery of Modern Art, People's Palace, The Burrell Collection, Riverside Museum, The Tall Ship at Riverside, Kevin Hall Open Collections, Kelvingrove Art Gallery and Museum, The Tenement House, Royal Highland Fusiliers Regimental Museum, St Mungo museum Of Religious Life and Art, Gallery of Modern Art, People's Palace, The Burrell Collection, Riverside Museum, The Tall Ship at Riverside, Kevin Hall Open Collections, Kelvingrove Art Gallery and Museum, The Tenement House, Royal Highland Fusiliers Regimental Museum, St Mungo museum Of Religious Life and Art, Gallery of Modern Art, People's Palace, The Burrell Collection, Riverside Museum, The Tall Ship at Riverside, Kevin Hall Open Collections, Kelvingrove Art Gallery and Museum, The Tenement House, Royal Highland Fusiliers Regimental Museum, St Mungo museum Of Religious Life and Art, Gallery of Modern Art, People's Palace, The Burrell Collection, Riverside Museum, The Tall Ship at Riverside, Kevin Hall Open Collections, Kelvingrove Art Gallery and Museum, The Tenement House, Royal Highland Fusiliers Regimental Museum, St Mungo museum Of Religious Life and Art, Gallery of Modern Art, People's Palace, The Burrell Collection, Riverside Museum, The Tall Ship at Riverside, Kevin Hall Open Collections, Kelvingrove Art Gallery and Museum, The Tenement House, Royal Highland Fusiliers Regimental Museum, St Mungo museum Of Religious Life and Art, Gallery of Modern Art, People's Palace, The Burrell Collection, Riverside Museum, The Tall Ship at Riverside, Kevin Hall Open Collections, Kelvingrove Art Gallery and Museum, The Tenement House, Royal Highland Fusiliers Regimental Museum, St Mungo museum Of Religious Life and Art, Gallery of Modern Art, People's Palace, The Burrell Collection, Riverside Museum, The Tall Ship at Riverside, Kevin Hall Open Collections, Kelvingrove Art Gallery and Museum, The Tenement House, Royal Highland Fusiliers Regimental Museum, St Mungo museum Of Religious Life and Art, Gallery of Modern Art, People's Palace, The Burrell Collection, Riverside Museum, The Tall Ship at Riverside, Kevin Hall Open Collections, Kelvingrove Art Gallery and Museum, The Tenement House, Royal Highland Fusiliers Regimental Museum, St Mungo museum Of Religious Life and Art, Gallery of Modern Art, People's Palace, The Burrell Collection, Riverside Museum, The Tall Ship at Riverside, Kevin Hall Open Collections, Kelvingrove Art Gallery and Museum, The Tenement House, Royal Highland Fusiliers Regimental Museum, St Mungo museum Of Religious Life and Art, Gallery of Modern Art, People's Palace, The Burrell Collection, Riverside Museum, The Tall Ship at Riverside, Kevin Hall Open Collections, Kelvingrove Art Gallery and Museum, The Tenement House, Royal Highland Fusiliers Regimental Museum, St Mungo museum Of Religious Life and Art, Gallery of Modern Art, People's Palace, The Burrell Collection, Riverside Museum, The Tall Ship at Riverside, Kevin Hall Open Collections, Kelvingrove Art Gallery and Museum, The Tenement House, Royal Highland Fusiliers Regimental Museum, St Mungo museum Of Religious Life and Art, Gallery of Modern Art, People's Palace, The Burrell Collection, Riverside Museum, The Tall Ship at Riverside, Kevin Hall Open Collections, Kelvingrove Art Gallery and Museum, The Tenement House, Royal Highland Fusiliers Regimental Museum, St Mungo museum Of Religious Life and Art, Gallery of Modern Art, People's Palace, The Burrell Collection, Riverside Museum, The Tall Ship at Riverside, Kevin Hall Open Collections, Kelvingrove Art Gallery and Museum, The Tenement House, Royal Highland Fusiliers Regimental Museum, St Mungo museum Of Religious Life and Art, Gallery of Modern Art, People's Palace, The Burrell Collection, Riverside Museum, The Tall Ship at Riverside, Kevin Hall Open Collections, Kelvingrove Art Gallery and Museum, The Tenement House, Royal Highland Fusiliers Regimental Museum, St Mungo museum Of Religious Life and Art, Gallery of Modern Art, People's Palace, The Burrell Collection, Riverside Museum, The Tall Ship at Riverside, Kevin Hall Open Collections, Kelvingrove Art Gallery and Museum, The Tenement House, Royal Highland Fusiliers Regimental Museum, St Mungo museum Of Religious Life and Art, Gallery of Modern Art, People's Palace, The Burrell Collection, Riverside Museum, The Tall Ship at Riverside, Kevin Hall Open Collections, Kelvingrove Art Gallery and Museum, The Tenement House, Royal Highland Fusiliers Regimental Museum, St Mungo museum Of Religious Life and Art, Gallery of Modern Art, People's Palace, The Burrell Collection, Riverside Museum, The Tall Ship at Riverside, Kevin Hall Open Collections, Kelvingrove Art Gallery and Museum, The Tenement House, Royal Highland Fusiliers Regimental Museum, St Mungo museum Of Religious Life and Art, Gallery of Modern Art, People's Palace, The Burrell Collection, Riverside Museum, The Tall Ship at Riverside, Kevin Hall Open Collections, Kelvingrove Art Gallery and Museum, The Tenement House, Royal Highland Fusiliers Regimental Museum, St Mungo museum Of Religious Life and Art, Gallery of Modern Art, People's Palace, The Burrell Collection, Riverside Museum, The Tall Ship at Riverside, Kevin Hall Open Collections, Kelvingrove Art Gallery and Museum, The Tenement House, Royal Highland Fusiliers Regimental Museum, St Mungo museum Of Religious Life and Art, Gallery of Modern Art, People's Palace, The Burrell Collection, Riverside Museum, The Tall Ship at Riverside, Kevin Hall Open Collections, Kelvingrove Art Gallery and Museum, The Tenement House, Royal Highland Fusiliers Regimental Museum, St Mungo museum Of Religious Life and Art, Gallery of Modern Art, People's Palace, The Burrell Collection, Riverside Museum, The Tall Ship at Riverside, Kevin Hall Open Collections, Kelvingrove Art Gallery and Museum, The Tenement House, Royal Highland Fusiliers Regimental Museum, St Mungo museum Of Religious Life and Art, Gallery of Modern Art, People's Palace, The Burrell Collection, Riverside Museum, The Tall Ship at Riverside, Kevin Hall Open Collections, Kelvingrove Art Gallery and Museum, The Tenement House, Royal Highland Fusiliers Regimental Museum, St Mungo museum Of Religious Life and Art, Gallery of Modern Art, People's Palace, The Burrell Collection, Riverside Museum, The Tall Ship at Riverside, Kevin Hall Open Collections, Kelvingrove Art Gallery and Museum, The Tenement House, Royal Highland Fusiliers Regimental Museum, St Mungo museum Of Religious Life and Art, Gallery of Modern Art, People's Palace, The Burrell Collection, Riverside Museum, The Tall Ship at Riverside, Kevin Hall Open Collections, Kelvingrove Art Gallery and Museum, The Tenement House, Royal Highland Fusiliers Regimental Museum, St Mungo museum Of Religious Life and Art, Gallery of Modern Art, People's Palace, The Burrell Collection, Riverside Museum, The Tall Ship at Riverside, Kevin Hall Open Collections, Kelvingrove Art Gallery and Museum, The Tenement House, Royal Highland Fusiliers Regimental Museum, St Mungo museum Of Religious Life and Art, Gallery of Modern Art, People's Palace, The Burrell Collection, Riverside Museum, The Tall Ship at Riverside, Kevin Hall Open Collections, Kelvingrove Art Gallery and Museum, The Tenement House, Royal Highland Fusiliers Regimental Museum, St Mungo museum Of Religious Life and Art, Gallery of Modern Art, People's Palace, The Burrell Collection, Riverside Museum, The Tall Ship at Riverside, Kevin Hall Open Collections, Kelvingrove Art Gallery and Museum, The Tenement House, Royal Highland Fusiliers Regimental Museum, St Mungo museum Of Religious Life and Art, Gallery of Modern Art, People's Palace, The Burrell Collection, Riverside Museum, The Tall Ship at Riverside, Kevin Hall Open Collections, Kelvingrove Art Gallery and Museum, The Tenement House, Royal Highland Fusiliers Regimental Museum, St Mungo museum Of Religious Life and Art, Gallery of Modern Art, People's Palace, The Burrell Collection, Riverside Museum, The Tall Ship at Riverside, Kevin Hall Open Collections, Kelvingrove Art Gallery and Museum, The Tenement House, Royal Highland Fusiliers Regimental Museum, St Mungo museum Of Religious Life and Art, Gallery of Modern Art, People's Palace, The Burrell Collection, Riverside Museum, The Tall Ship at Riverside, Kevin Hall Open Collections, Kelvingrove Art Gallery and Museum, The Tenement House, Royal Highland Fusiliers Regimental Museum, St Mungo museum Of Religious Life and Art, Gallery of Modern Art, People's Palace, The Burrell Collection, Riverside Museum, The Tall Ship at Riverside, Kevin Hall Open Collections, Kelvingrove Art Gallery and Museum, The Tenement House, Royal Highland Fusiliers Regimental Museum, St Mungo museum Of Religious Life and Art, Gallery of Modern Art, People's Palace, The Burrell Collection, Riverside Museum, The Tall Ship at Riverside, Kevin Hall Open Collections, Kelvingrove Art Gallery and Museum, The Tenement House, Royal Highland Fusiliers Regimental Museum, St Mungo museum Of Religious Life and Art, Gallery of Modern Art, People's Palace, The Burrell Collection, Riverside Museum, The Tall Ship at Riverside, Kevin Hall Open Collections, Kelvingrove Art Gallery and Museum, The Tenement House, Royal Highland Fusiliers Regimental Museum, St Mungo museum Of Religious Life and Art, Gallery of Modern Art, People's Palace, The Burrell Collection, Riverside Museum, The Tall Ship at Riverside, Kevin Hall Open Collections, Kelvingrove Art Gallery and Museum, The Tenement House, Royal Highland Fusiliers Regimental Museum, St Mungo museum Of Religious Life and Art, Gallery of Modern Art, People's Palace, The Burrell Collection, Riverside Museum, The Tall Ship at Riverside, Kevin Hall Open Collections, Kelvingrove Art Gallery and Museum, The Tenement House, Royal Highland Fusiliers Regimental Museum, St Mungo museum Of Religious Life and Art, Gallery of Modern Art, People's Palace, The Burrell Collection, Riverside Museum, The Tall Ship at Riverside, Kevin Hall Open Collections, Kelvingrove Art Gallery and Museum, The Tenement House, Royal Highland Fusiliers Regimental Museum, St Mungo museum Of Religious Life and Art, Gallery of Modern Art, People's Palace, The Burrell Collection, Riverside Museum, The Tall Ship at Riverside, Kevin Hall Open Collections, Kelvingrove Art Gallery and Museum, The Tenement House, Royal Highland Fusiliers Regimental Museum, St Mungo museum Of Religious Life and Art, Gallery of Modern Art, People's Palace, The Burrell Collection, Riverside Museum, The Tall Ship at Riverside, Kevin Hall Open Collections, Kelvingrove Art Gallery and Museum, The Tenement House, Royal Highland Fusiliers Regimental Museum, St Mungo museum Of Religious Life and Art, Gallery of Modern Art, People's Palace, The Burrell Collection, Riverside Museum, The Tall Ship at Riverside, Kevin Hall Open Collections, Kelvingrove Art Gallery and Museum, The Tenement House, Royal Highland Fusiliers Regimental Museum, St Mungo museum Of Religious Life and Art, Gallery of Modern Art, People's Palace, The Burrell Collection, Riverside Museum, The Tall Ship at Riverside, Kevin Hall Open Collections, Kelvingrove Art Gallery and Museum, The Tenement House, Royal Highland Fusiliers Regimental Museum, St Mungo museum Of Religious Life and Art, Gallery of Modern Art, People's Palace, The Burrell Collection, Riverside Museum, The Tall Ship at Riverside, Kevin Hall Open Collections, Kelvingrove Art Gallery and Museum, The Tenement House, Royal Highland Fusiliers Regimental Museum, St Mungo museum Of Religious Life and Art, Gallery of Modern Art, People's Palace, The Burrell Collection, Riverside Museum, The Tall Ship at Riverside, Kevin Hall Open Collections, Kelvingrove Art Gallery and Museum, The Tenement House, Royal Highland Fusiliers Regimental Museum, St Mungo museum Of Religious Life and Art, Gallery of Modern Art, People's Palace, The Burrell Collection, Riverside Museum, The Tall Ship at Riverside, Kevin Hall Open Collections, Kelvingrove Art Gallery and Museum, The Tenement House, Royal Highland Fusiliers Regimental Museum, St Mungo museum Of Religious Life and Art, Gallery of Modern Art, People's Palace, The Burrell Collection, Riverside Museum, The Tall Ship at Riverside, Kevin Hall Open Collections, Kelvingrove Art Gallery and Museum, The Tenement House, Royal Highland Fusiliers Regimental Museum, St Mungo museum Of Religious Life and Art, Gallery of Modern Art, People's Palace, The Burrell Collection, Riverside Museum, The Tall Ship at Riverside, Kevin Hall Open Collections, Kelvingrove Art Gallery and Museum, The Tenement House, Royal Highland Fusiliers Regimental Museum, St Mungo museum Of Religious Life and Art, Gallery of Modern Art, People's Palace, The Burrell Collection, Riverside Museum, The Tall Ship at Riverside, Kevin Hall Open Collections, Kelvingrove Art Gallery and Museum, The Tenement House, Royal Highland Fusiliers Regimental Museum, St Mungo museum Of Religious Life and Art, Gallery of Modern Art, People's Palace, The Burrell Collection, Riverside Museum, The Tall Ship at Riverside, Kevin Hall Open Collections, Kelvingrove Art Gallery and Museum, The Tenement House, Royal Highland Fusiliers Regimental Museum, St Mungo museum Of Religious Life and Art, Gallery of Modern Art, People's Palace, The Burrell Collection, Riverside Museum, The Tall Ship at Riverside, Kevin Hall Open Collections, Kelvingrove Art Gallery and Museum, The Tenement House, Royal Highland Fusiliers Regimental Museum, St Mungo museum Of Religious Life and Art, Gallery of Modern Art, People's Palace, The Burrell Collection, Riverside Museum, The Tall Ship at Riverside, Kevin Hall Open Collections, Kelvingrove Art Gallery and Museum, The Tenement House, Royal Highland Fusiliers Regimental Museum, St Mungo museum Of Religious Life and Art, Gallery of Modern Art, People's Palace, The Burrell Collection, Riverside Museum, The Tall Ship at Riverside, Kevin Hall Open Collections, Kelvingrove Art Gallery and Museum, The Tenement House, Royal Highland Fusiliers Regimental Museum, St Mungo museum Of Religious Life and Art, Gallery of Modern Art, People's Palace, The Burrell Collection, Riverside Museum, The Tall Ship at Riverside, Kevin Hall Open Collections, Kelvingrove Art Gallery and Museum, The Tenement House, Royal Highland Fusiliers Regimental Museum, St Mungo museum Of Religious Life and Art, Gallery of Modern Art, People's Palace, The Burrell Collection, Riverside Museum, The Tall Ship at Riverside, Kevin Hall Open Collections, Kelvingrove Art Gallery and Museum, The Tenement House, Royal Highland Fusiliers Regimental Museum, St Mungo museum Of Religious Life and Art, Gallery of Modern Art, People's Palace, The Burrell Collection, Riverside Museum, The Tall Ship at Riverside, Kevin Hall Open Collections, Kelvingrove Art Gallery and Museum, The Tenement House, Royal Highland Fusiliers Regimental Museum, St Mungo museum Of Religious Life and Art, Gallery of Modern Art, People's Palace, The Burrell Collection, Riverside Museum, The Tall Ship at Riverside, Kevin Hall Open Collections, Kelvingrove Art Gallery and Museum, The Tenement House, Royal Highland Fusiliers Regimental Museum, St Mungo museum Of Religious Life and Art, Gallery of Modern Art, People's Palace, The Burrell Collection, Riverside Museum, The Tall Ship at Riverside, Kevin Hall Open Collections, Kelvingrove Art Gallery and Museum, The Tenement House, Royal Highland Fusiliers Regimental Museum, St Mungo museum Of Religious Life and Art, Gallery of Modern Art, People's Palace, The Burrell Collection, Riverside Museum, The Tall Ship at Riverside, Kevin Hall Open Collections, Kelvingrove Art Gallery and Museum, The Tenement House, Royal Highland Fusiliers Regimental Museum, St Mungo museum Of Religious Life and Art, Gallery of Modern Art, People's Palace, The Burrell Collection, Riverside Museum, The Tall Ship at Riverside, Kevin Hall Open Collections, Kelvingrove Art Gallery and Museum, The Tenement House, Royal Highland Fusiliers Regimental Museum, St Mungo museum Of Religious Life and Art, Gallery of Modern Art, People's Palace, The Burrell Collection, Riverside Museum, The Tall Ship at Riverside, Kevin Hall Open Collections, Kelvingrove Art Gallery and Museum, The Tenement House, Royal Highland Fusiliers Regimental Museum, St Mungo museum Of Religious Life and Art, Gallery of Modern Art, People's Palace, The Burrell Collection, Riverside Museum, The Tall Ship at Riverside, Kevin Hall Open Collections, Kelvingrove Art Gallery and Museum, The Tenement House, Royal Highland Fusiliers Regimental Museum, St Mungo museum Of Religious Life and Art, Gallery of Modern Art, People's Palace, The Burrell Collection, Riverside Museum, The Tall Ship at Riverside