



CONCRETE JUNGLES: EXPLORING THE CITY THROUGH PARKOUR

By Hugo Knowles

Theatre & Performance BA

Laidlaw Scholar

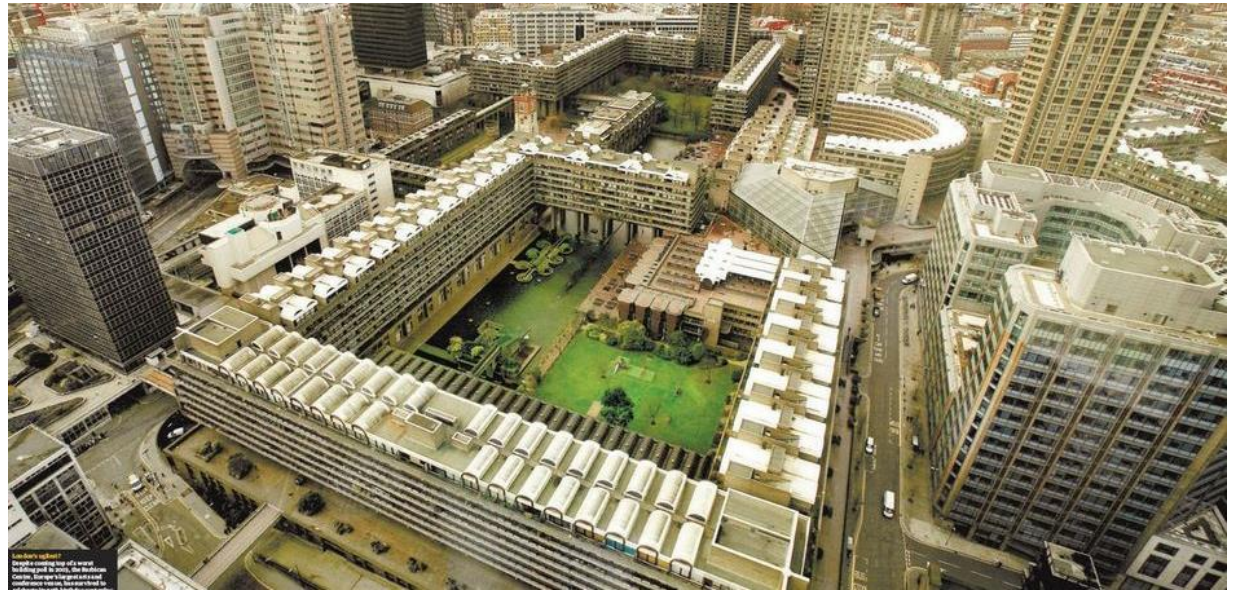
Photo credit:
Jaron Levitt.

PARKOUR

- French movement discipline
- Founded in the early 1980s in a suburb of Paris
- Based on military obstacle course training, hence the A to B definition often given
- **However**, my research suggests that parkour has evolved beyond that and has become a form of performance/artistic expression

THE CONCRETE JUNGLE

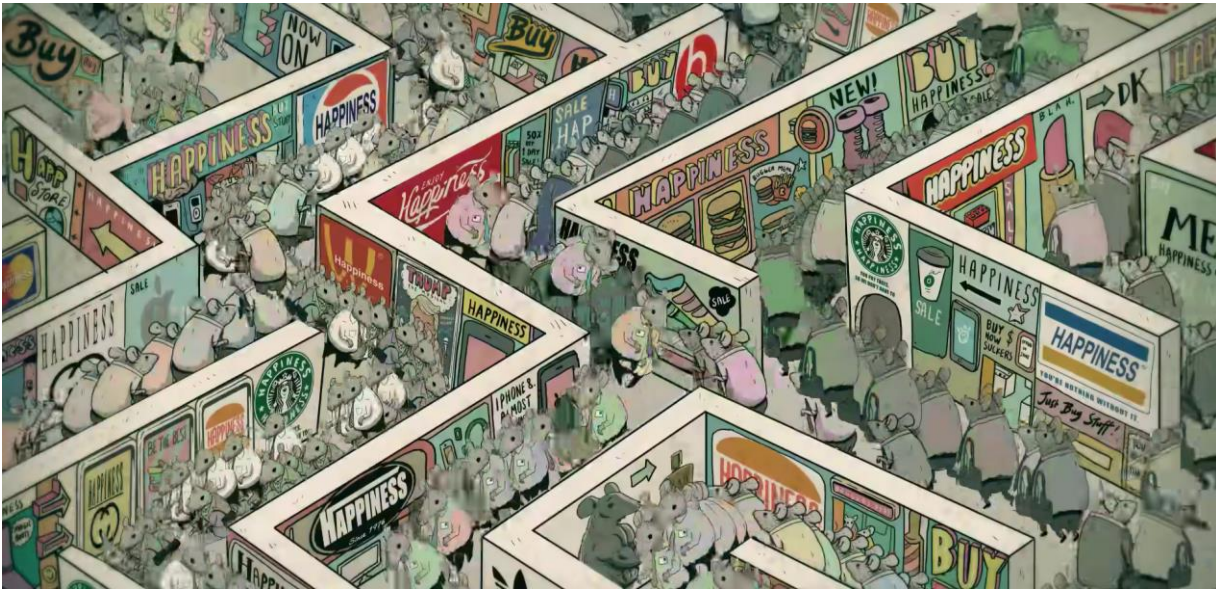
A city with lots of unattractive, modern buildings that is perceived as an unpleasant living environment (Oxford Dictionary)



**THE CONCRETE JUNGLE
AS A 'WILDERNESS'**

THE 'CORPORATE CITY'

The corporate city is seen [...] as the embodiment of power relationships of a distinctly postmodern nature, a means to preserve and promote [...] discourses like globalisation and consumerism. (Daskalaki, 2008)



Happiness (Cutts, 2017) - <https://youtu.be/e9dZQeiULDk>





**SO, HOW DOES PARKOUR
SUBVERT THE
'CORPORATE CITY'?**



“[Evry demonstrates the] failure of the development to create any sense of public life.

[...]

“The infamous Parisian suburbs, [...] are among the most alienating and dehumanising urban clusters in the world.”

(Daskalaki, 2008)



PARKOUR

SUBVERTING URBAN SPACE

During *parkour* activities, spaces acquire new use, becoming a liberating rather than restricting element in human experience.

(Daskalaki, 2008)

THE 'WILDERNESS'

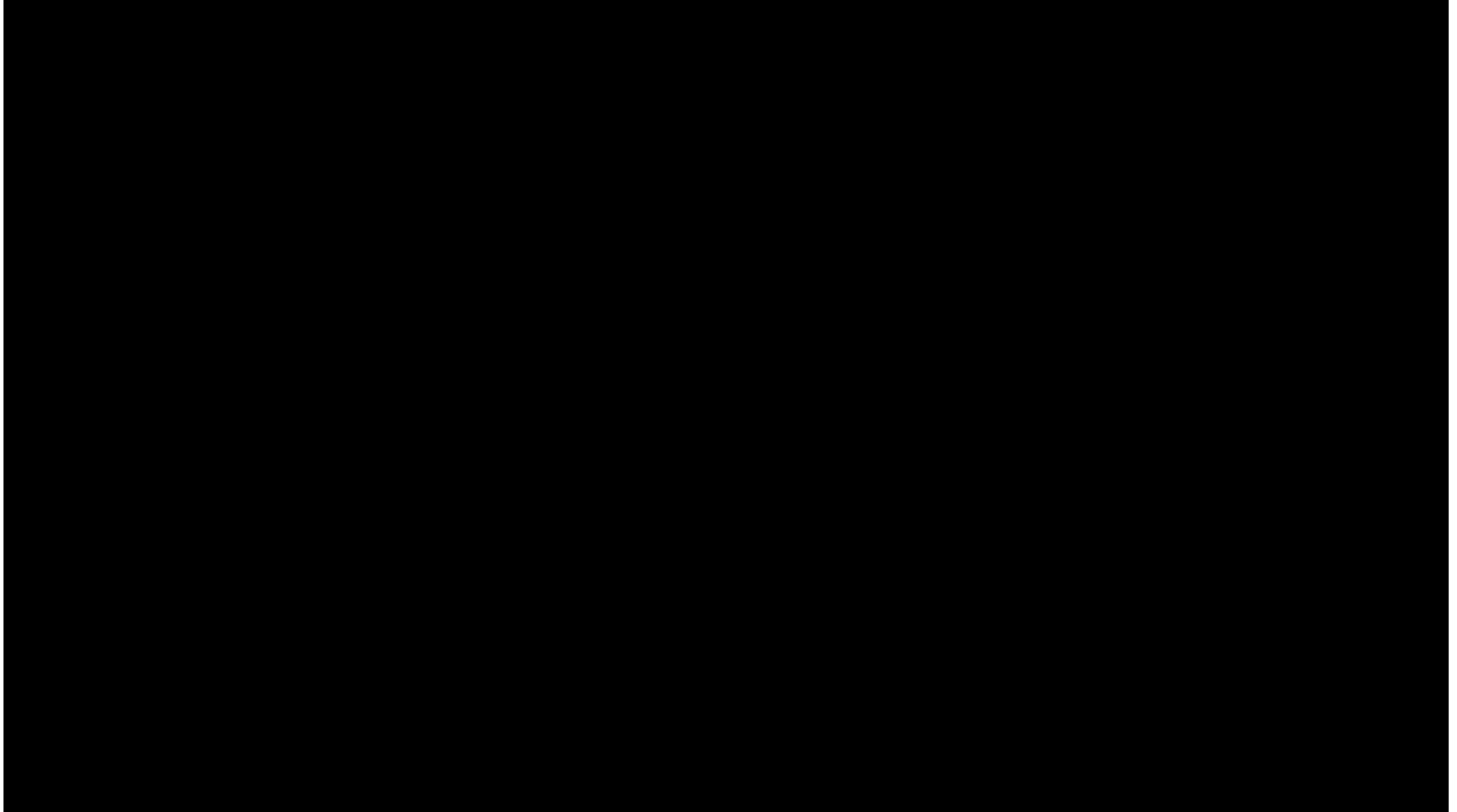
Any city can become a wild space, not by the physical sectioning off of a park or the marking of an historic area with signs, but instead through the intentional mental and physical practices of that city's explorers.

(Bunting, 2015)



The young immigrant populations that explored Evry [created] a new type of beauty and interpretation of the landscape.

(Angel, 2016, p.31)



THANK YOU!