

# Review of Menstrual Health Policy in India, Kenya, Senegal, and the United States

Lillian Rountree, Columbia University

With thanks to Dr. Inga Winkler; Purvaja Kavattur; Elina Govil; Dean Ariella Lang; WSSCC and the Institute for the Study of Human Rights at Columbia



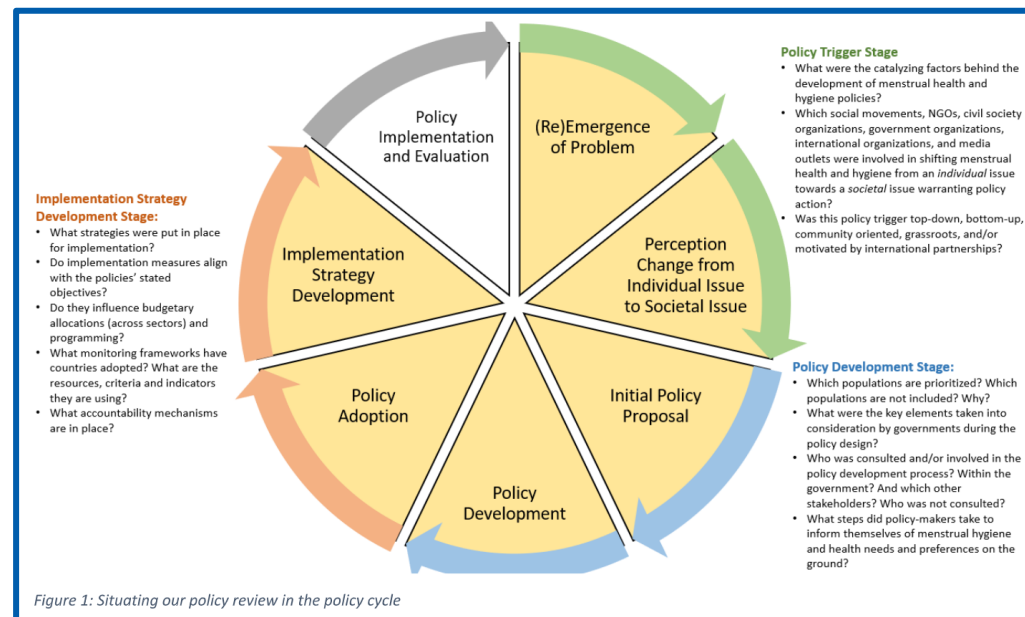
## RESEARCH QUESTIONS

What does current menstrual health policy look like, and how was it formed? How effective is it at addressing the issues of menstrual health and hygiene?

## METHODOLOGY

- Interviews with key stakeholders in countries of interest, including:
  - NGO leaders
  - Activists
  - Academics and experts
  - Government officials
- Policy document retrieval from countries of interest
  - Limited to explicit discussions of menstrual health and/or hygiene
- Qualitative coding of these key interviews and policy documents using NVivo software
- Thematic analysis of key texts based on qualitative coding
- Desk reviews of national policy

Source for photo: Policy review project design



## KEY ISSUES

- What channels are used to further menstrual health policy?
- Is change government-led, activist-led, a mix, or other?
- Are marginalized populations included in these policies?
  - Such populations include incarcerated, disabled, or indigenous peoples, and more
- Are certain issues, such as product access or education, focused on more than others? Are certain issues ignored?

## NEXT STEPS & GOALS

- This is an ongoing project with a preliminary report due in December
  - What is working in this policy? What is not working?
- Continuation of interviews and coding to lay groundwork for thematic analysis
- Findings from the project will be distributed
- Hope for it to be a tool for stakeholders trying to initiate effective menstrual health policy

## CHALLENGES

- COVID-19 has significantly slowed the pace of this project
  - Restrictions for travel have impeded the interview process and on-the-ground work in countries of interest, as well as access to non-digitized policy documents
- Stigma around menstruation and affected populations can impede conversations with key stakeholders