

# Germany in the British Consciousness Before 1914

Holly Perril and Dr Corinne Painter, School of Languages Cultures and Societies, University of Leeds

## The Beginnings of Anti-German Sentiment in Britain Post-1890

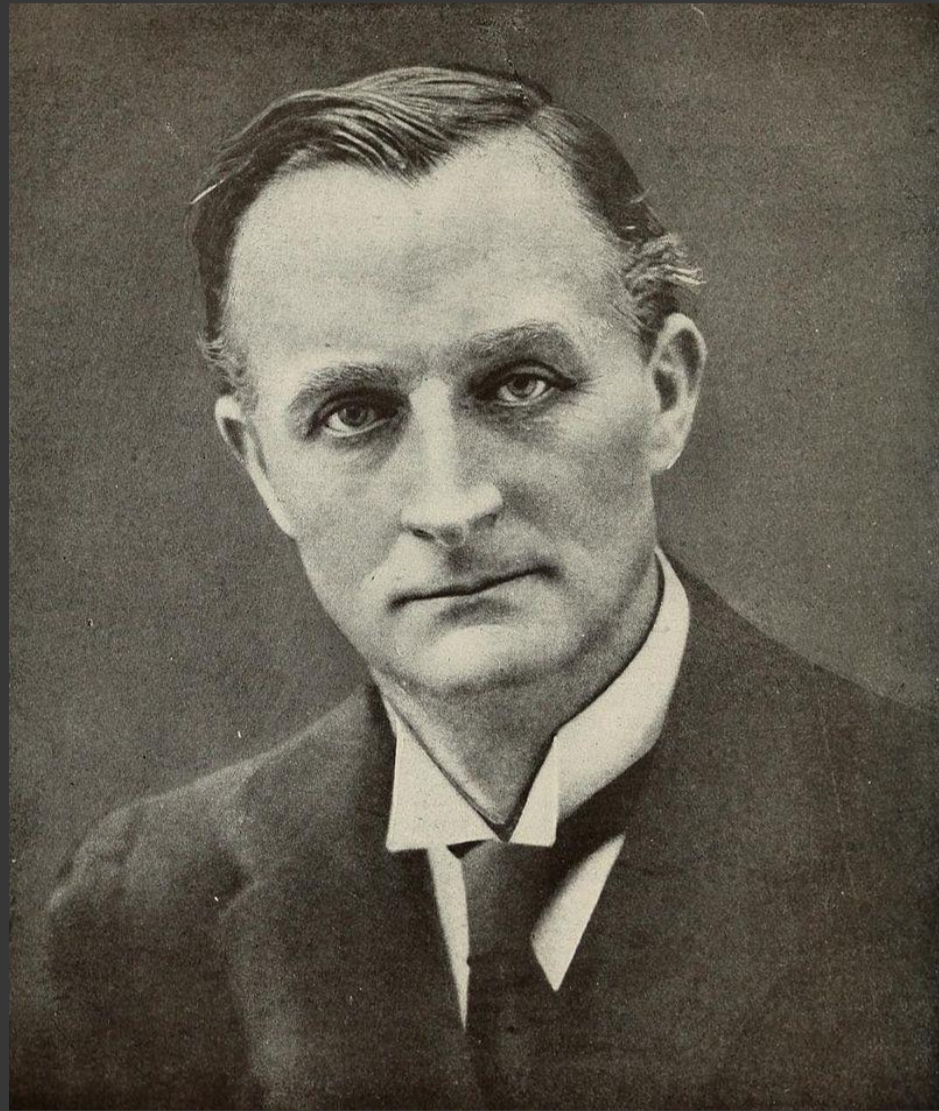


Figure 2: Sir Edward Grey, Viscount of Falloden and later Foreign Secretary of Britain. Image taken from *The World's Work*: Arthur W. Page, *The World's Work* (London: Doubleday, Page & Company, 1919), p. 161.

### The 'dark and dangerous current' running between Britain and Germany

Echoing this developing anxiety and increasing watchfulness over German cultural and economic achievement, Sleightholme-Albanis draws attention to a rising scepticism in British political rhetoric towards Germany surfacing in the 1890s. This is evident in Sir Edward Grey (Figure 3), the Viscount of Falloden and later Foreign Secretary of Britain, perceiving a 'dark and dangerous current' in German policy from his work in Foreign Office from 1892-1895.

Notably, within the same time frame in the 1890s, there was a popularization of the study of German within Britain, in which the number of German students at the University of Cambridge had risen to an all-time high and German teaching spread to London Universities. This is described in *Die deutsche Kolonie in England*, in which the dissemination of German teaching in the 1890s is highlighted, as 'bald begannen auch die andern Universitäten, zunächst London, ihre Lehrpläne und Prüfungsordnungen umzugestalten.'

## German at Leeds- The Early Years

1884

- German teaching begins with 'Medieval and Modern Languages Tripos' at the University of Cambridge in Britain

- Increased interest in German culture in Britain. University of Cambridge requires students to study the history of German literature

1885

- German teaching spreads to London universities.
- German begins to be taught at Leeds by Dr Joseph Schauss, an English rabbi educated in Germany

1890

- Dr Albert Wilhelm Schüdderkopf is appointed first professor of German at Yorkshire College in Leeds

1897

- Dr Charles Edward Gough appointed as Assistant lecturer in the Department of German at Leeds

1902

- German established as a single honours
- Previously German could only be studied alongside French and English

1920

## Conclusions: What was the impact of pre-war international relations on the development of German Studies?

The establishment of German teaching throughout Britain demonstrates the increased awareness of the contribution of German culture, language and identity to wider Europe. However, the blackening of political rhetoric towards Germany, as is conveyed by the perception of Germany's precedence on the world stage as 'dark' and 'dangerous', emphasizes the intimidation of Britain in the face of German success which set the tone for British-German relations entering the 20<sup>th</sup> Century, as German cultural domination is perceived as a threat to the status of British culture and identity on the world stage.



Figure 3: Reproduced with the permission of Special Collections, Leeds University Library, Liddle Collection, LUA/PHC/003/5.