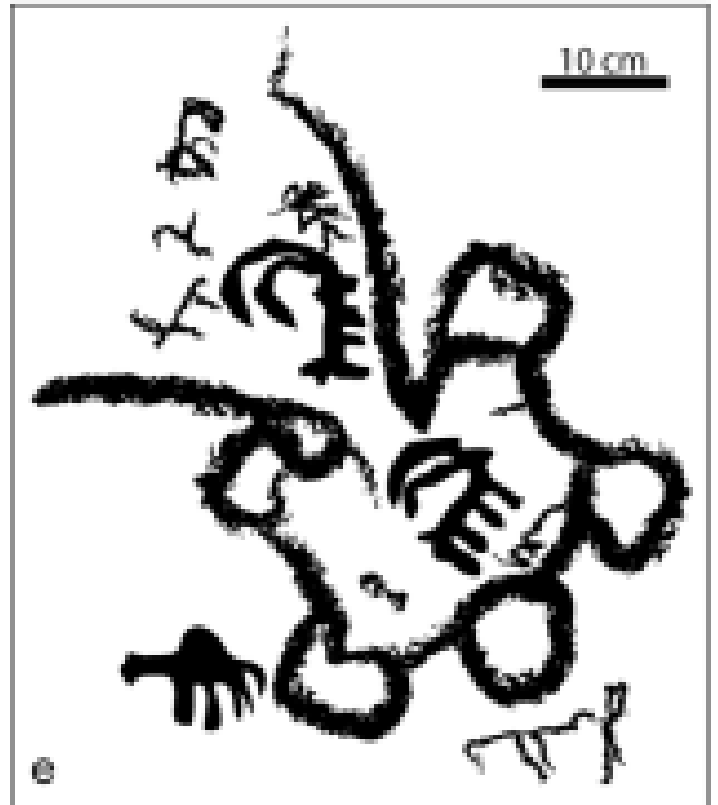


Mapping the Steppe: Identification and condition assessment of archaeological sites in arid zones in Syria

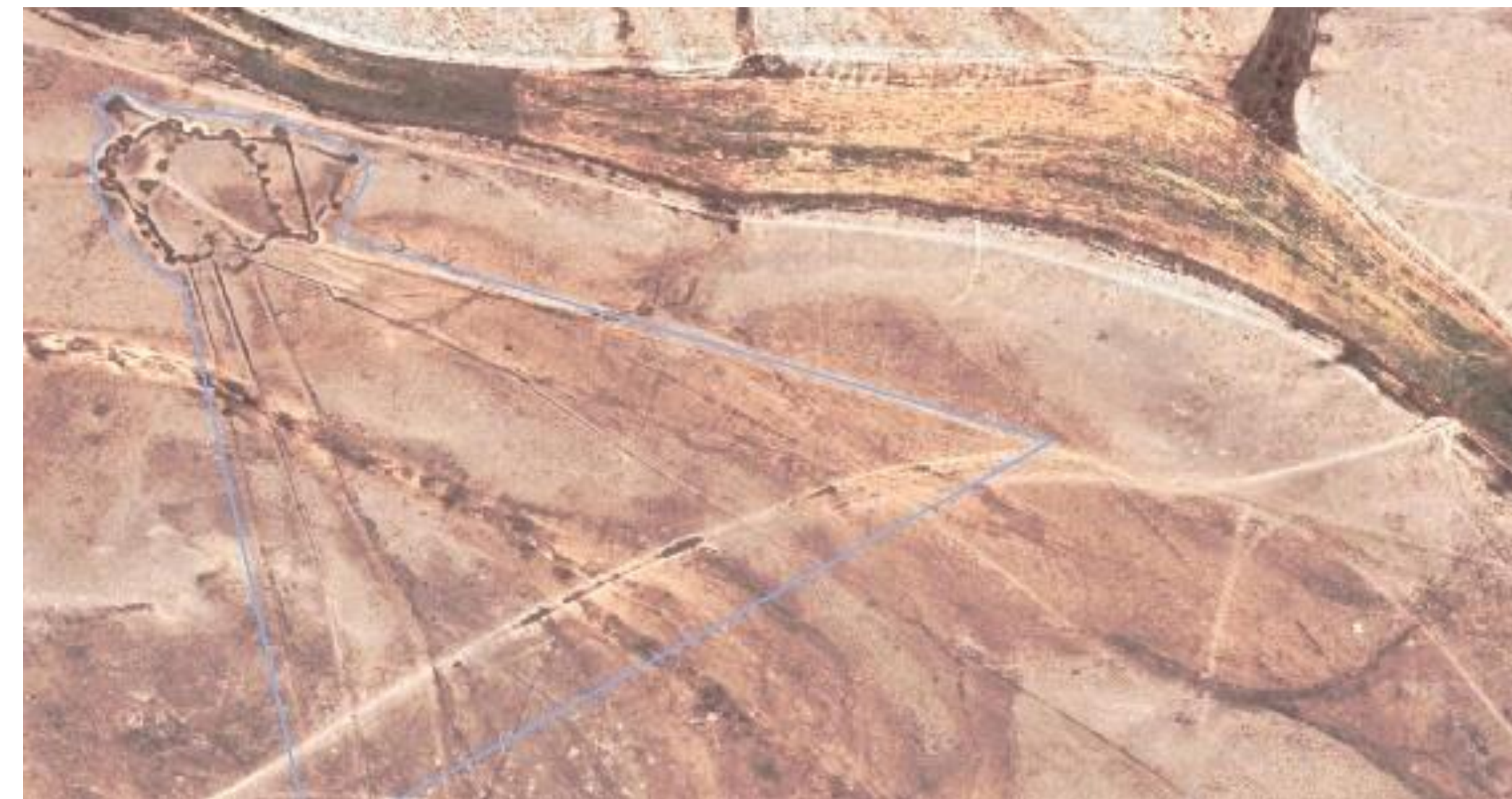
Author: Zachariah Weissand Supervisor: Kristen Hopper
Durham University 2022



Rock Art depiction of a hunt, Picalause et al., 2004

Methodology

The remote sensing survey started with the extraction of points associated with kites from the 'Globalkites Interactive Map'. Using the rapid surveying technique, utilising historic and modern imagery, the grid squares were inspected to ensure all kites and other notable features were recorded, polygons were then drawn around these features and once all grid squares were completed this data was uploaded into QGIS. The kites were then cursorily analysed via the EAMENA bulk upload sheet criteria which comprised of various categorisations from archaeological to condition assessments. Finally, the data was extensively analysed via rendering external sources of information such as geomorphological and hydrological data over the kite locations to determine factors affecting their creation and use.



Use

Were nomadic in following migration movements and subsisting solely off of hunting and the animals taken with the tribe or if they were engaged in a semi-pastoral existence?

What can modifications, superimpositions and kite placement tell us about hunting patterns?

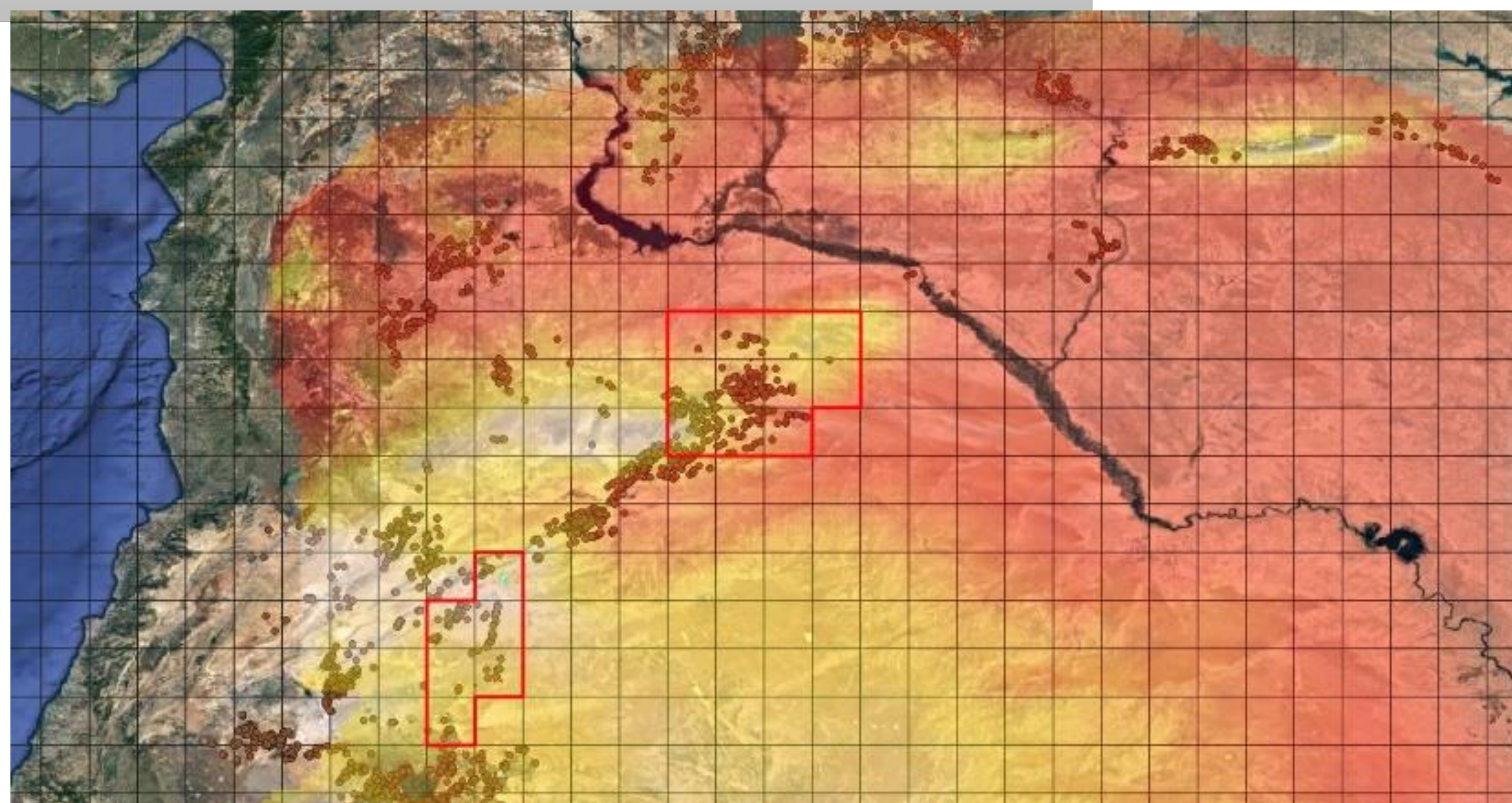
Was this settlement in use at the same time as the kites ?

Was it used seasonally or permanently ?



Elevation

Wadis form along the alluvial fans overlaid with impermeable coarse alluvial deposits so that the rainwater flows into a stream. The formation of wadis would lead to a higher volume of water at higher elevations, attracting more animals and therefore more hunters. Hence the presence of kites in areas transitioning towards high elevation.



Elevation Map of Desert Kites in Syria; high elevation shown in red

References: Picalause, P., Cauwe, N., Lemaitre, S., Vander Linden, M., & Van Berg, P. L. (2004). Desert- kites of the Hemma plateau (Hassake, Syria). *Paléorient*, 30(1), 89–99



Durham University



With acknowledgement of the help of the EAMENA project