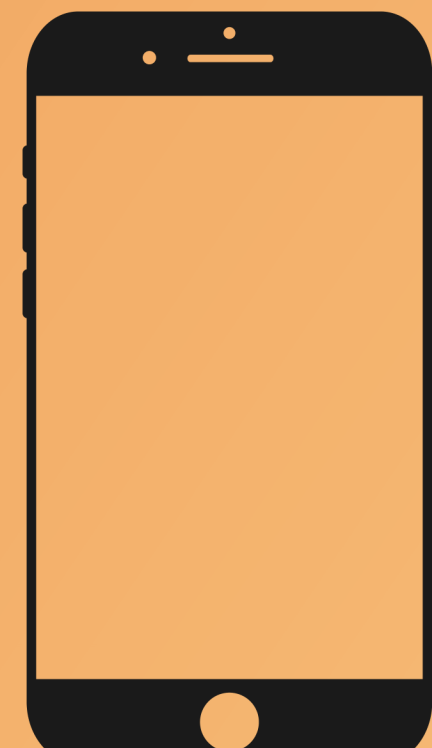


# Climate change fuels human-wildlife conflict in East and southern Africa, threatening food security, income, and overall livelihood.



Scan the QR code to download the full paper, poster, and a bonus infographic!

## Synthesizing the interconnectedness of climate change and human-wildlife conflict in East and southern Africa in the 21st Century

Trisha Bhujle

✉ trb238@cornell.edu

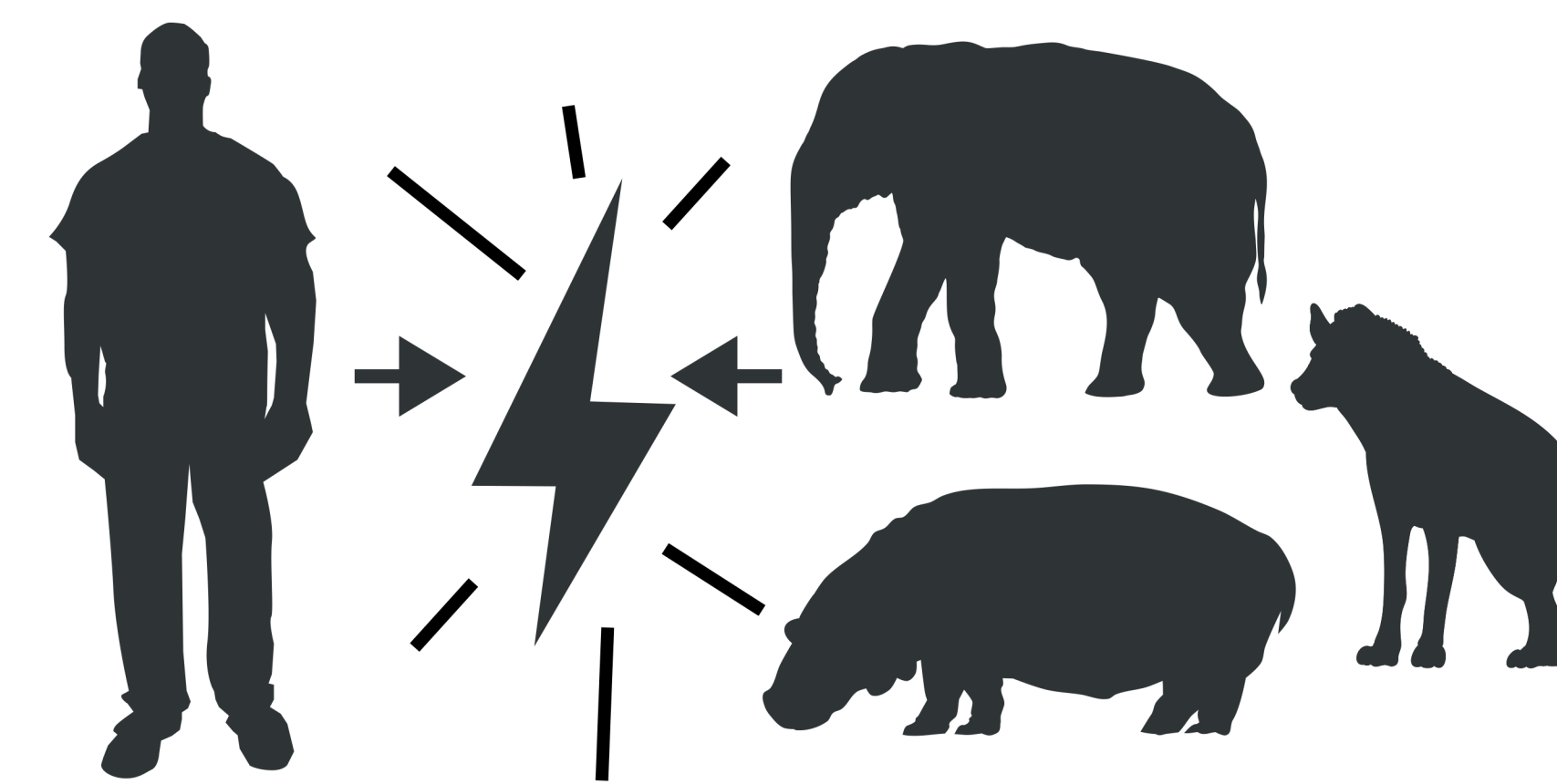
in /trisha-bhujle

Supervised by Dr. Darragh Hare and Dr. Shorna Allred  
Morally Contested Conservation Project



### Introduction

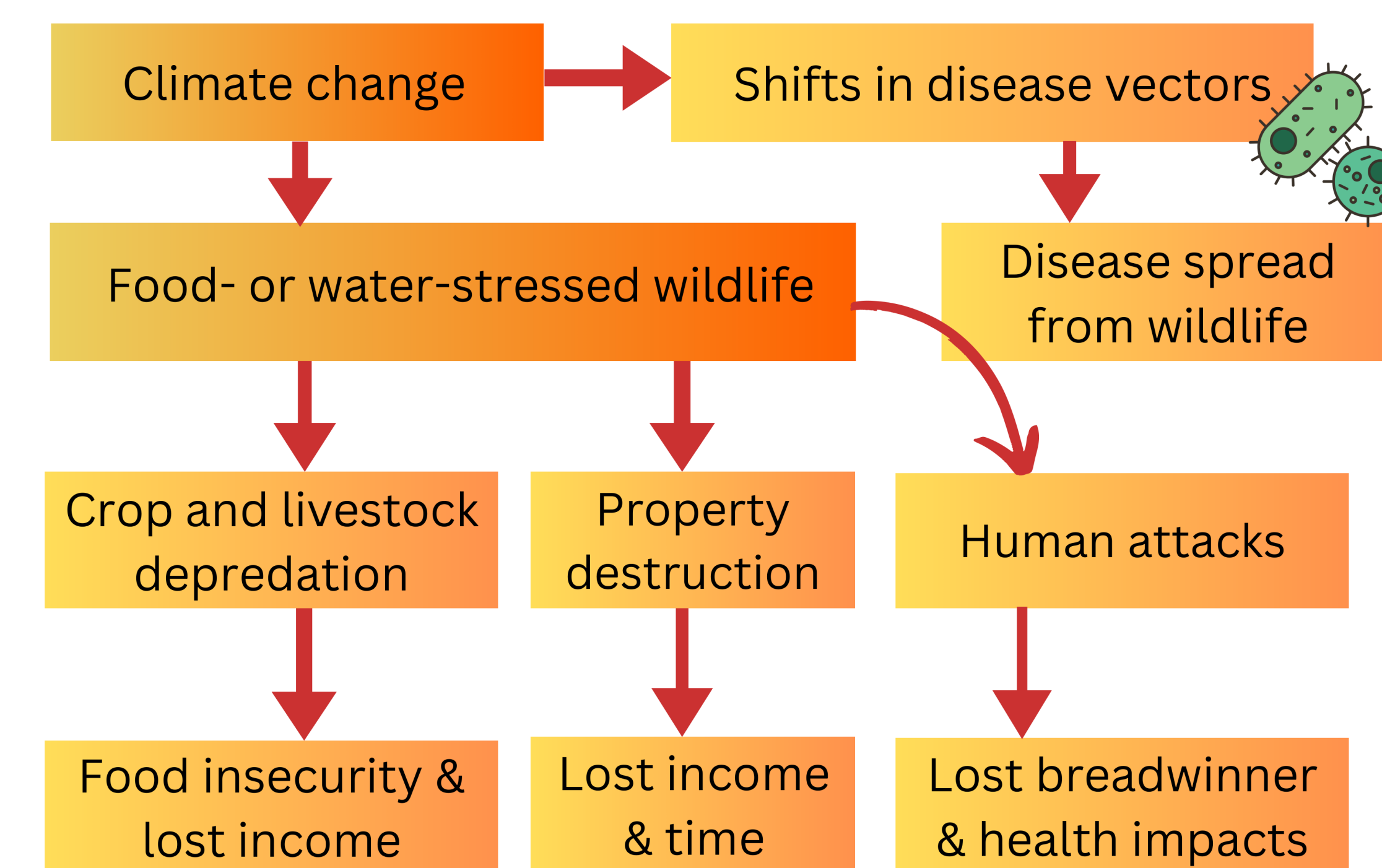
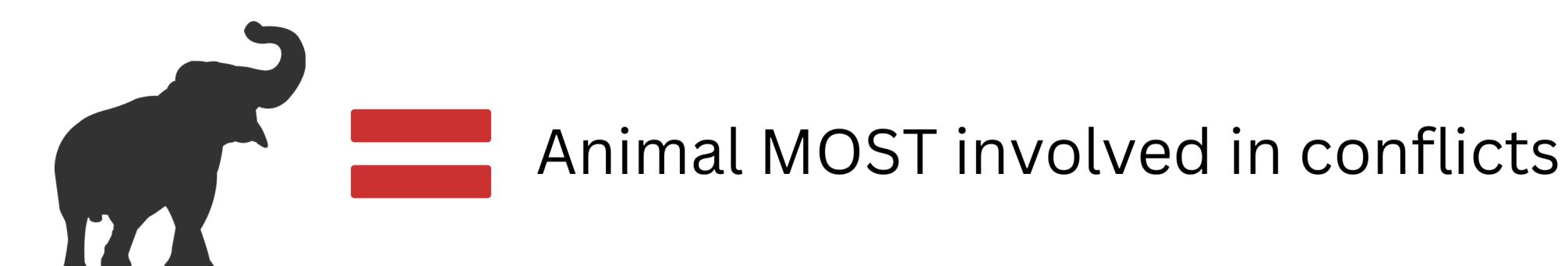
- Climate change intensifies competition for resources among humans, livestock, and wildlife
- Southern Africa expected to become drier and hotter, and East Africa expected to become wetter



### Methods: Literature Review

- 4 databases, 40 peer-reviewed publications, and 61 added publications from backwards citation tracking
- Search strategy: ("human-wildlife conflict" OR "human-wildlife coexistence" OR "human-wildlife interactions") AND ("drought or climate") AND ("Africa")

### Forms & Outcomes of Conflict



Community Responses	External Responses
<ul style="list-style-type: none"> <li>Retaliatory killings of wildlife</li> <li>Attempts to <b>diversify livelihoods</b> (e.g. beekeeping, poaching)</li> <li>Changes in <b>cropping</b> (e.g. watching fields at night)</li> <li>Changes in <b>livestock herding</b> (e.g. using drought-tolerant livestock)</li> </ul>	<ul style="list-style-type: none"> <li><b>Neglecting to respond</b> to conflict reports</li> <li><b>Limited inclusion of communities</b> in decision-making</li> <li>Sometimes: <b>driving away</b> or <b>killing</b> problem animals</li> </ul>

### Proposed Mitigation Measures & Identified Challenges

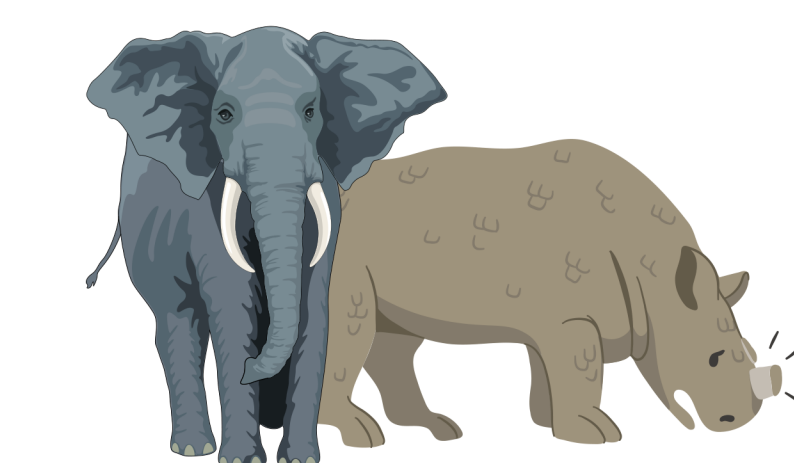
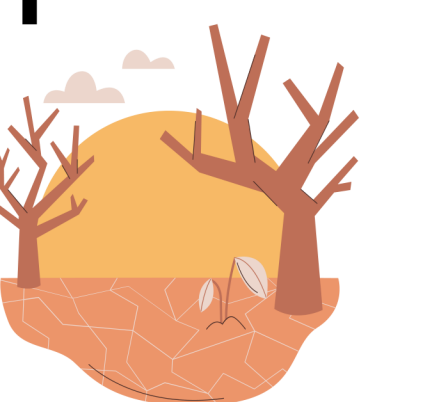
Short-Term	Long-Term
<b>Compensation &amp; Food Provisions</b> Often <b>lower</b> than damage costs Promote <b>corruption</b> and <b>agricultural expansion</b>	<b>Data-Driven Decision Making</b> Must promote community members as <b>leaders</b> in data collection and education
<b>Spatial Separation</b> Prone to <b>destruction</b> (e.g. fences) <b>Ethical issues</b> (e.g. forced relocation)	<b>Local Buy-In</b> Must <b>center communities</b> in discussions on conservation and climate change
<b>Artificial Water Points</b> Can <b>sedentarize</b> or support more wildlife Require regular <b>maintenance</b>	<b>Agricultural Changes</b> Can <b>alter diets</b> May be <b>unsupported</b> by locals who rely on crops or livestock

### Conclusion

- Forms, outcomes, and solutions to climate-driven human-wildlife conflicts are diverse
- Mitigation measures have ethical, environmental, and/or financial implications
- Conflicts threaten SDGs 1 (No Poverty), 2 (No Hunger), 13 (Climate Action), and 15 (Life on Land)

### Areas of Future Research

Potential for drought corridors to facilitate wildlife movements and lower conflicts



Increased local acceptability of poaching in the face of climate-driven conflicts

Physical health (e.g. disease, injury) and mental health (e.g. sleep loss, stress) outcomes of conflicts

