

Stories At Stake: Preserving Biocultural Heritage in East Kalimantan

Claire Wu

Advised by Drs. Wendy M. Erb and Walker DePuy

How can we combine *participatory bioacoustics* and *ethnography* to design research and develop outputs that advance community needs?

Indonesia's capital is relocating from the historic city of Jakarta, on the island of Java, to a rural region on the island of Borneo. Major relocation concerns include local and Indigenous residents' land rights and political power, as well as ecological degradation. Since 2022, our international team of natural and social scientists, students, and local community partners have investigated the development of Nusantara and its effects on human and nonhuman communities.



Our Nusantara fieldwork team with students in Mentawir, each with their own copy of the children's book (*Apakah Masih Akan Mendengarnya?*)

Picture credit: Muhaku Production

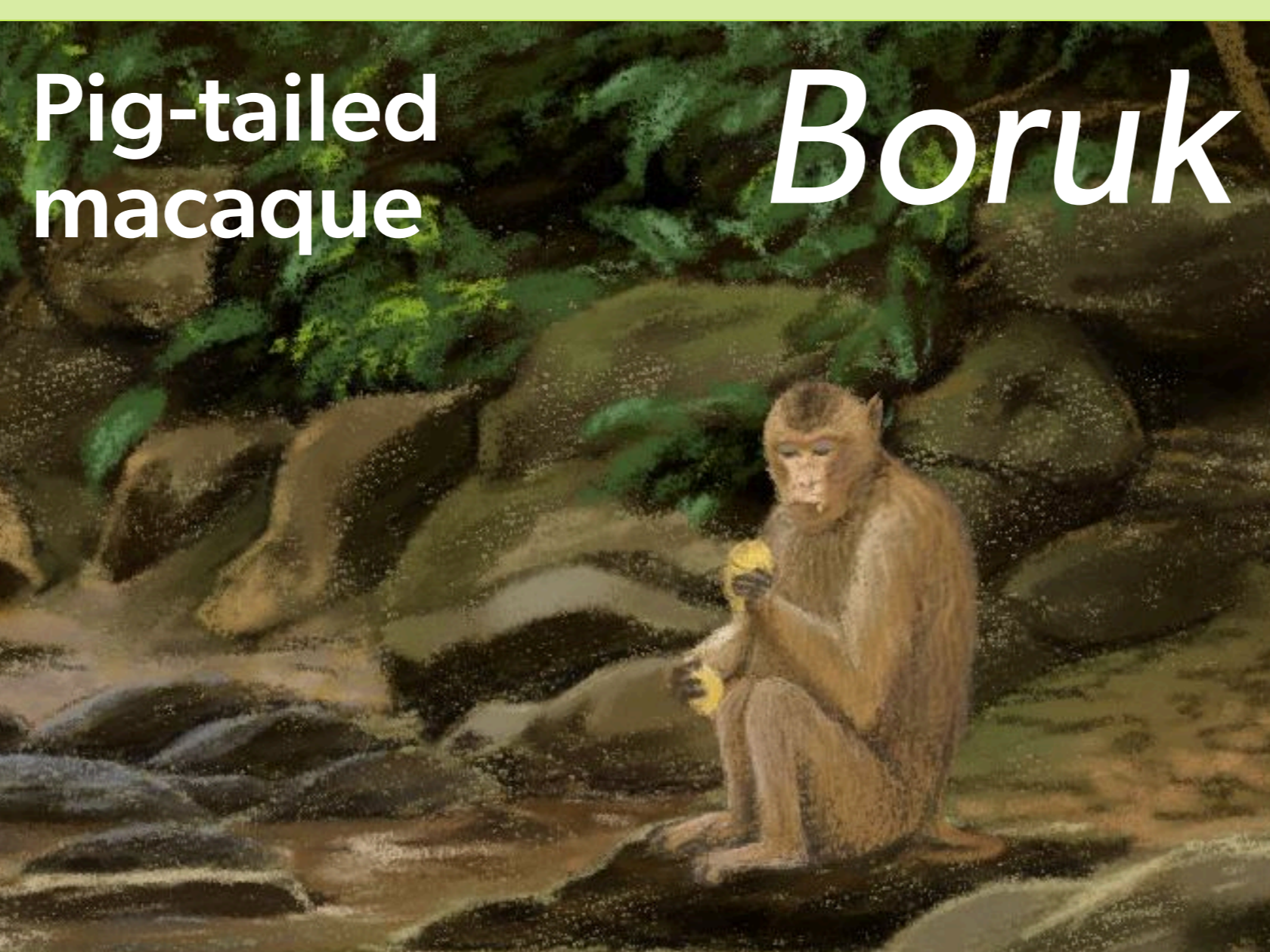


We co-created a children's book with our community partners document, preserve, and pass down traditional biocultural knowledge when their Indigenous lands and connection to nature are threatened



Mini-documentary here!

- 300 books distributed to partners and key institutions (schools, government)
- Education program in 2 village elementary schools to highlight local biocultural heritage, featuring an interactive multimedia sound library (Raven Exhibit)



Acknowledgements:
Thank you to Abidin and Ardini and Jubaen from Pemaluan; Lamale, Dorsat, Baco, and Sahnan from Mentawir; Indah Sartika Sari, Esther Adinda, Astrid Lim, Misael Kris Simone, Pebri Sara Tampubolon, Shoma Alired, Rustam, Chandra Boer, Emi Purwanti, Choiratun Nur Annisa, and Hanendi Muhammad Ghamalsa for support with research and/or book development. Funding for this project was generously provided by the Cornell Migrations Initiative, Cornell Office of the Vice Provost for International Affairs, Cornell Center for Conservation Social Sciences, Fulbright Program, John Foote and Kristen Rupert, and our GoFundMe donors.