



The Grass Isn't Greener on the Others' Side: Examining the Economic Integration of Immigrants in Stockholm through Unequal Access to Public Green Spaces

Milla Svensk Li

Supervised by Dr. Romelli, Department of Economics

Backgrounds and Aims

- Quantifying the integration shortcomings of first-generation immigrants compared to native-born Swedes
- Statistical Analysis between resident status within the same income bracket (60% median income)
 - Statistical wealth analysis
 - NDVI analysis of public green spaces
- Reframe colliding issues of anticipated influx of climate refugees and aging labour population as an economic and humanitarian opportunity

Is there evidence of an urban economic disparity between native-born and foreign-born residents earning below 60% of the median income, thereby indicating a shortcoming in Stockholm's integration system?"

Methodology

- Two-tiered quantitative analysis: Stockholm residents (20-66) stratified by municipality and citizen status: native-born Swedes and first-generation immigrants (2018 & 2022)
 - Calculate average:
 - Housing tenure
 - Employment rate
 - Average income
 - Education level
 - Calculate NDVI per municipality (2018 & 2022)
 - Statistical analysis of the relationship between wealth profile and NDVI values

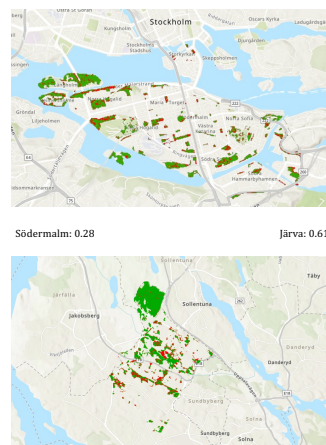
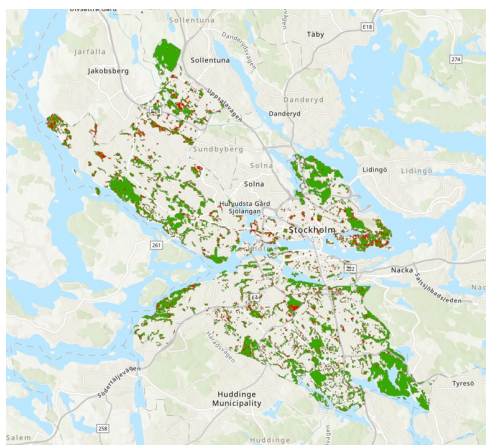
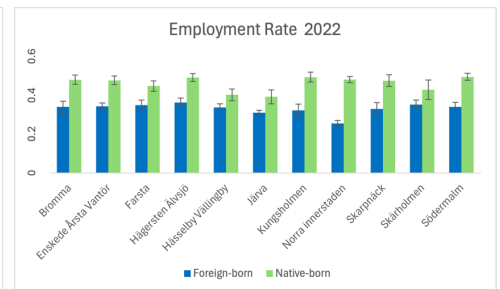
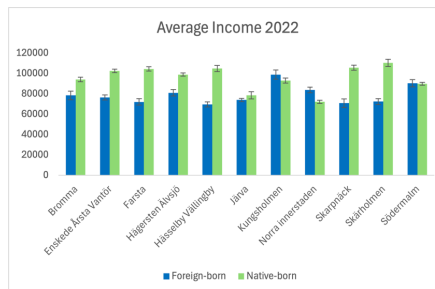
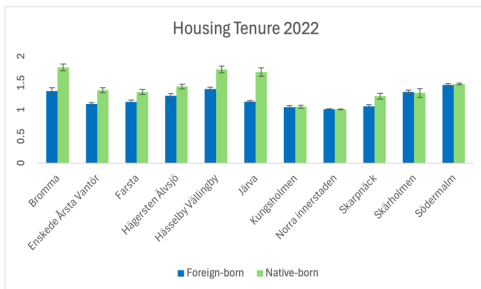
$$NDVI = \frac{\rho_{NIR} - \rho_{red}}{\rho_{NIR} + \rho_{red}}$$

NDVI values range from -1 to 1

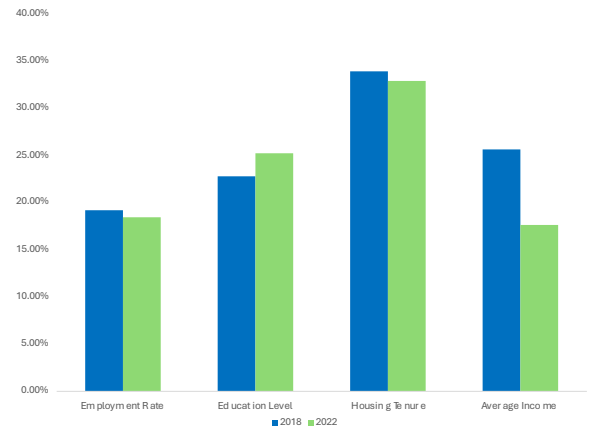


Model depiction of Sentinel-2 satellite

Results and Conclusion



Percent differential between Järva and Södermalm



Conclusions

- Minimal correlation between economic and NDVI values
 - Järva has a higher NDVI than Södermalm, likely attributed to gray space density in central, higher income districts
- Persistent economic disparity between foreign-born and native-born residents
 - Especially in average income and employment rate
- The shortcoming in sophisticated integration is not that of unequal access to green space, but of social alienation

Acknowledgements

I would like to acknowledge the Laidlaw Undergraduate Research Foundation, Dr. Romelli, and the Economics Department at Trinity College Dublin for this opportunity.
The study was financially supported by the Laidlaw Scholars Research and Leadership Programme.

References

- Campbell, Colin. 6 Feb. 2017. <https://Environmentalbiophysics.Org/Ndvi-Sensor/>, <https://i0.wp.com/www.environmentalbiophysics.org/wp-content/uploads/2017/02/Screen-Shot-2017-02-01-at-10.43.41-PM.png>.
- Model of a Sentinel-2 satellite. 14 Mar. 2012. <https://en.wikipedia.org/wiki/Sentinel-2>.