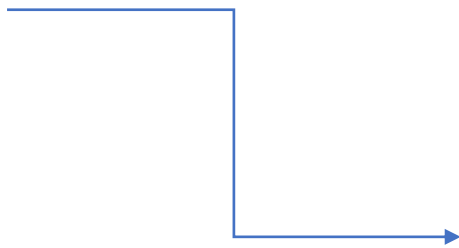
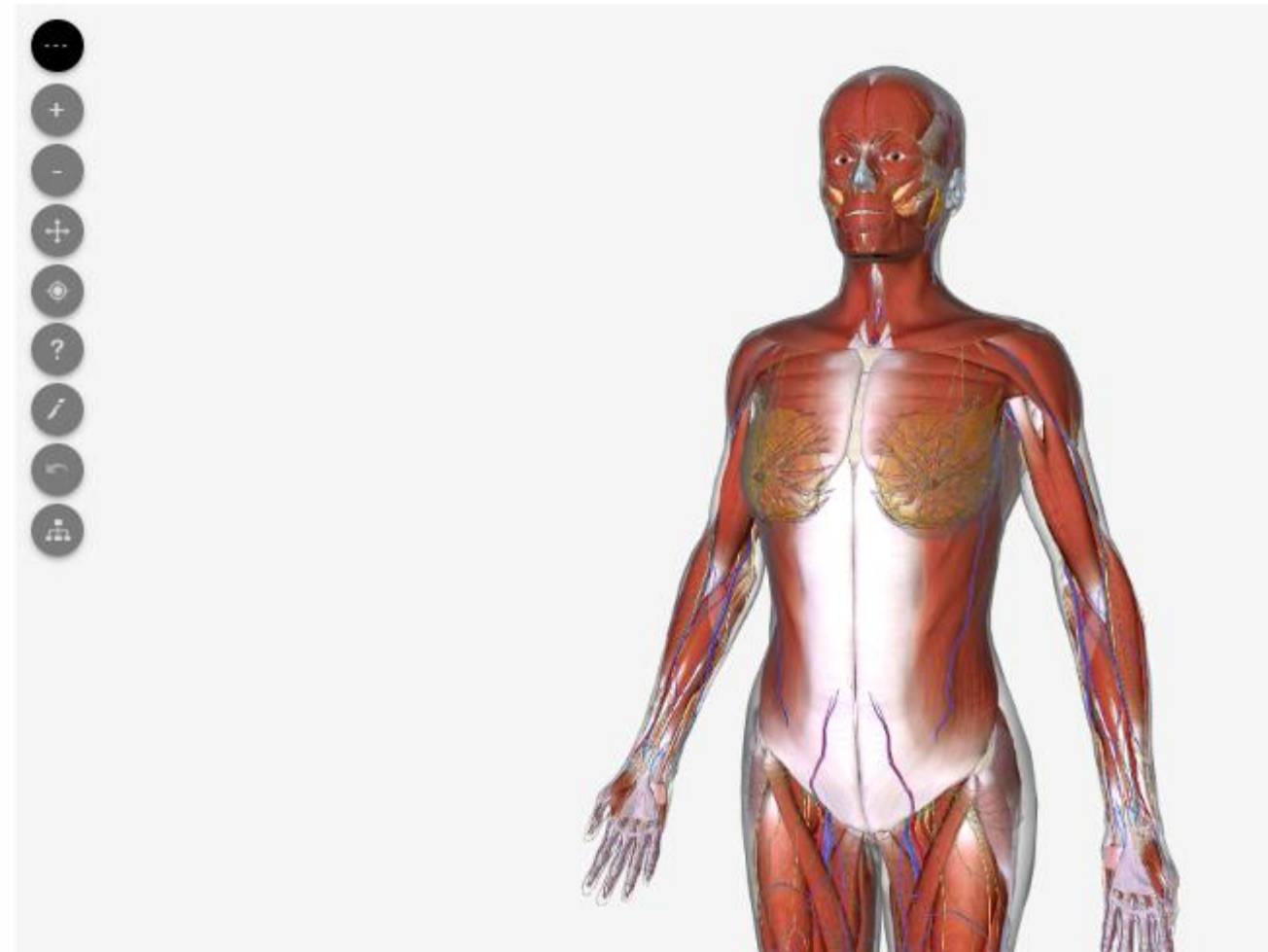


When the user clicks into the Female or Male Anatomy Module, the following left-sided navigation buttons appear, allowing the user to explore the world of human anatomy.

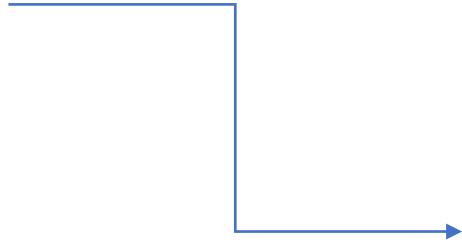


Female Anatomy Module

[Share](#)

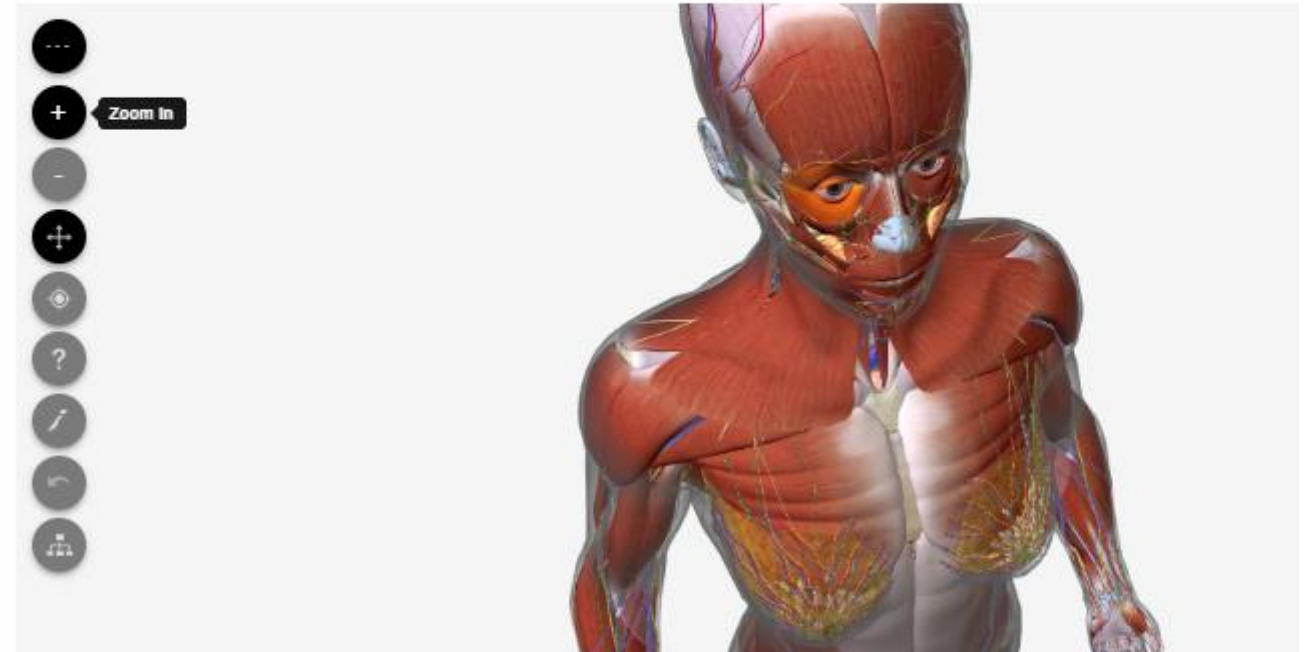


The “Zoom In” and “Zoom Out” buttons allow the user to focus in on a specific area and then easily pan out to the full module view.



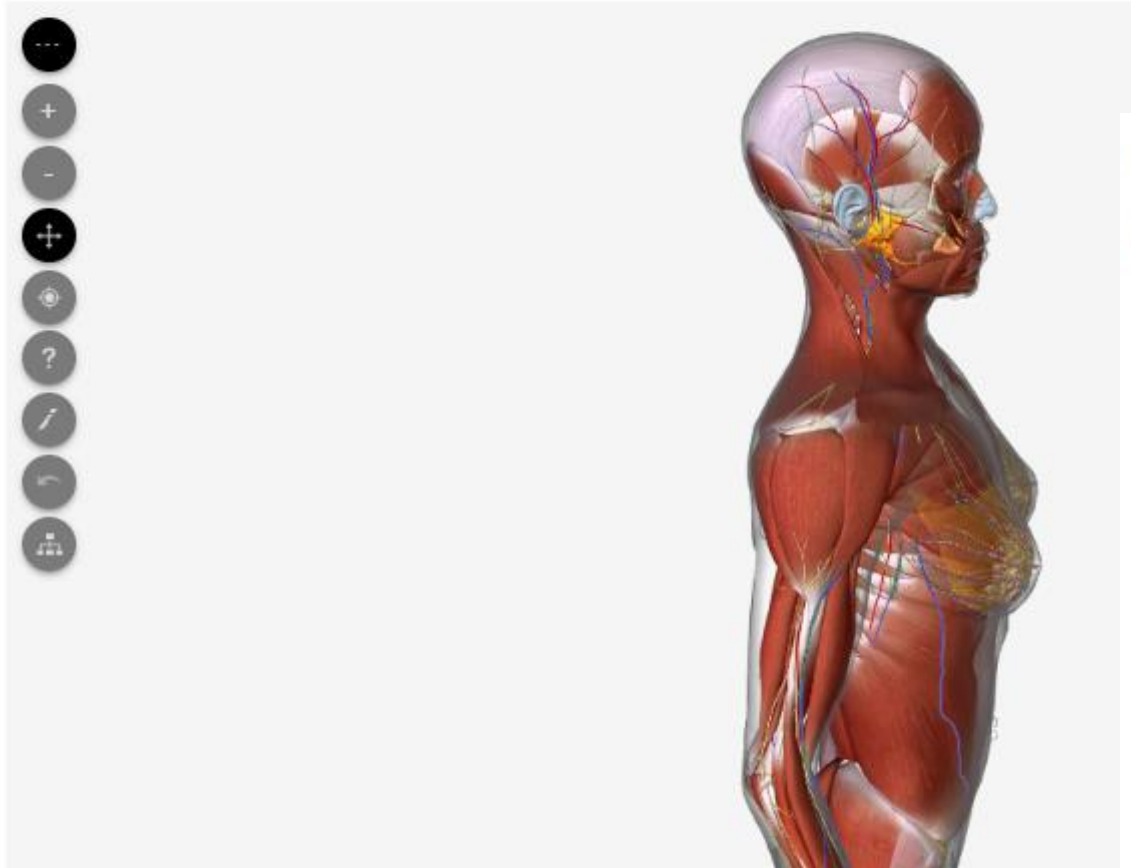
Female Anatomy Module

[Share](#)



Female Anatomy Module

[Share](#)



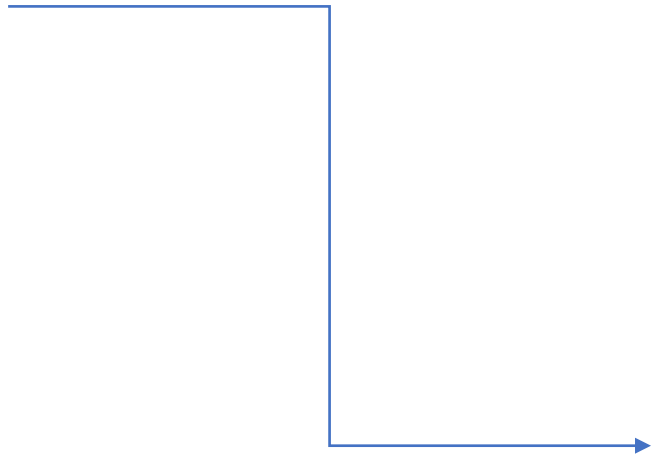
The “Orbit/Pan” button allows users to move the model to obtain better views of the desired portion of anatomy. The “Orbit” function allows the user to turn or spin the model, whereas the “Pan” function allows the user to move the model up and down or side-to-side in the same plane.

Female Anatomy Module

[Share](#)



The “Center” button allows the user to bring the model back to the center of the screen from using the “Pan/Orbit” function.



Female Anatomy Module

[Share](#)

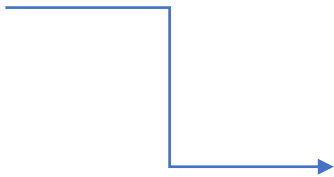


Female Anatomy Module



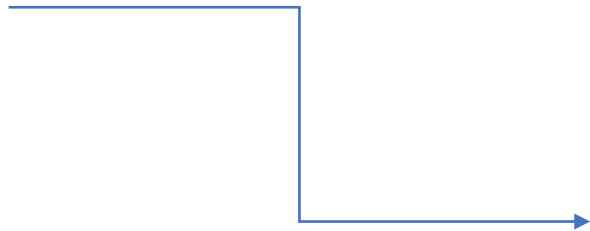
[Share](#)

Use the “Help” button to learn how to use the mouse to make the most out of the tools and features within the module.



The screenshot displays the 'Female Anatomy Module' interface. On the left, a vertical toolbar contains several icons: a menu icon (three dots), a plus sign, a minus sign, a plus sign, a magnifying glass, a question mark, a pencil, a curved arrow, and a plus sign. A blue arrow points from the text on the left to the question mark icon. In the center, a white dialog box titled 'Interact with the Human in 3D with the help of your mouse, touchpad, or keyboard, or the built-in quick buttons.' is open. The dialog has four tabs: 'Mouse' (selected), 'Keyboard', 'Touchpad', and 'Quick Buttons'. Below the tabs, there are five illustrations of mouse actions: 1. A single click on the left button, labeled 'Single Click to Select Object'. 2. Holding the left mouse button, labeled 'Hold left mouse button to Rotate'. 3. A double click on the left button, labeled 'Double Click to Auto Focus on an Object'. 4. A combination of the 'shift' key and a double click on the left button. 5. A red arrow pointing up and a pink arrow pointing down, indicating scroll actions.

Use the “Dissect” button to cut away layers of the anatomy to gain access to different layers of tissue, muscle, and organs. Click each layer to dissect. Simply unclick the scalpel when you no longer wish to dissect.

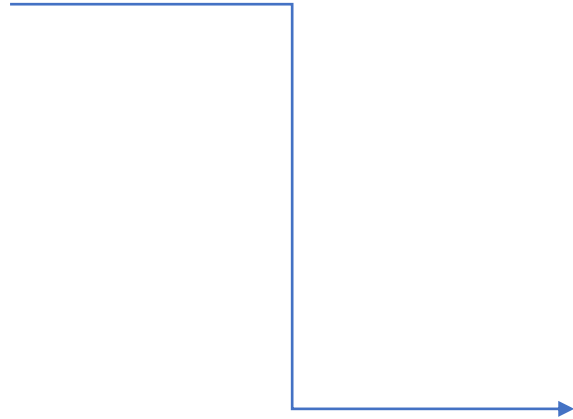


Female Anatomy Module

[Share](#)

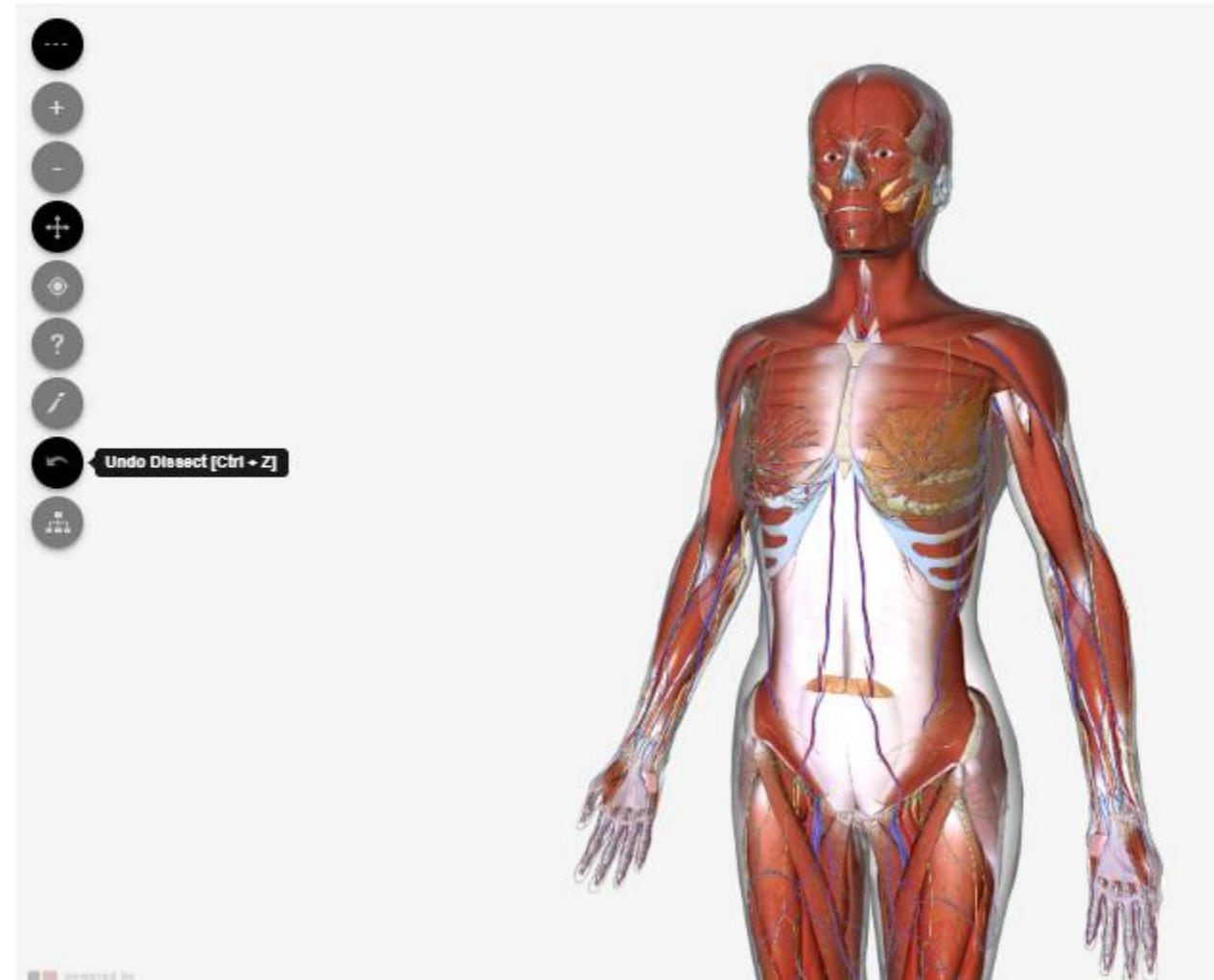


The “Undo” button allows you to undo the dissection and replace organs, muscle, and tissue to revisit these portions of anatomy.



Female Anatomy Module

[Share](#)



The “Object Tree” allows the user to add or remove portions of anatomy that would be visible on the model. For example, this user has deselected the “Muscular system” removing all muscle from the model.

Female Anatomy Module

[Share](#)

